

Recombinant Human GABARAPL1 protein, His-tagged

Cat. No. GABARAPL1-9876H Lot. No. (See product label)

SPECIFICATION

Product Overview	Recombinant Human GABARAPL1 protein(Q9H0R8)(132aa), fused with N-terminal His tag, was expressed in E. coli.
Species	Human
Source	E.coli
Protein Length	132aa(including fusion tag)
Tag	N-His
Form	20mM Tris.Cl, 50mM NaCl, 50% Glycerol, pH8.0.
Molecular Mass	16.0kDa(including fusion tag)
Storage	Store at -80°C and avoid repeated freeze-thaw cycles.
Reconstitution	It is recommended that sterile water be added to the vial to prepare a stock solution of 0.2 ug/ul. Centrifuge the vial at 4°C before opening to recover the entire contents.

GENE INFORMATION

Gene Name	GABARAPL1 GABA(A) receptor-associated protein like 1 [Homo sapiens]
Official Symbol	GABARAPL1

 Tel: 1-631-559-9269 1-516-512-3133

 Email: info@creative-biomart.com  Fax: 1-631-938-8127

 45-1 Ramsey Road, Shirley, NY 11967, USA

Synonyms GABARAPL1; GABA(A) receptor-associated protein like 1; gamma-aminobutyric acid receptor-associated protein-like 1; APG8L; ATG8B; ATG8L; gec1; GEC-1; GABARAPL1-a; early estrogen-regulated protein; glandular epithelial cell protein 1; GABA(A) receptor-associated protein-like 1; ATG8; GEC1; APG8-LIKE;

Gene ID 23710

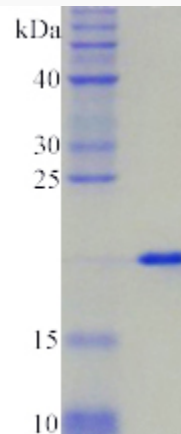
mRNA Refseq NM_031412

Protein Refseq NP_113600

MIM 607420

UniProt ID Q9H0R8

SDS-PAGE



 Tel: 1-631-559-9269 1-516-512-3133

 Email: info@creative-biomart.com  Fax: 1-631-938-8127

 45-1 Ramsey Road, Shirley, NY 11967, USA