

Recombinant Human BMI1 Protein(1-117aa), GST-tagged

Cat. No. GABARAPL2-482H **Lot. No.** (See product label)

SPECIFICATION

Product Overview	Recombinant Human BMI1 Protein(1-117aa)(P60520), fused with N-terminal GST tag, was expressed in E. coli.
Species	Human
Source	E.coli
ProteinLength	1-117aa
Form	If the delivery form is liquid, the default storage buffer is Tris/PBS-based buffer, 5%-50% glycerol. If the delivery form is lyophilized powder, the buffer before lyophilization is Tris/PBS-based buffer, 6% Trehalose, pH 8.0.
Molecular Mass	40.7kDa
AA Sequence	MKWMFKEDHSLEHRCVESAKIRAKYPDRVPVIVEKVGSGSQIVDIDKRKYLVPDITVA QFMWIIIRKRIQLPSEKAIFLVDKTVPQSSLTMGQLYEKEKDEDGFLYVAYSGENTFG F
Purity	Greater than 90% as determined by SDS-PAGE.
Storage	Store at -20°C/-80°C upon receipt, aliquoting is necessary for mutiple use. Avoid repeated freeze-thaw cycles.
Reconstitution	It is recommended that sterile water be added to the vial to prepare a stock solution of

 Tel: 1-631-559-9269 1-516-512-3133

 Email: info@creative-biomart.com  Fax: 1-631-938-8127

 45-1 Ramsey Road, Shirley, NY 11967, USA

0.2 ug/ul. Centrifuge the vial at 4°C before opening to recover the entire contents.

GENE INFORMATION

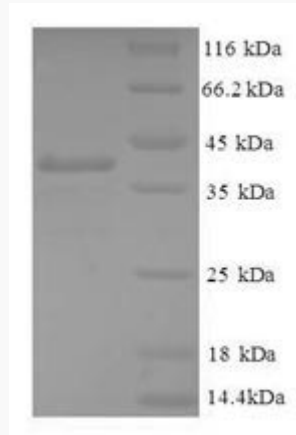
Gene Name	GABARAPL2 GABA(A) receptor-associated protein-like 2 [Homo sapiens]
Official Symbol	GABARAPL2
Synonyms	GABARAPL2; GABA(A) receptor-associated protein-like 2; gamma-aminobutyric acid receptor-associated protein-like 2; ATG8; ATG8C; GATE 16; GATE16; GEF2; ganglioside expression factor 2; MAP1 light chain 3 related protein; MAP1 light chain 3-related protein; general protein transport factor p16; golgi-associated ATPase enhancer of 16 kDa; GEF-2; GATE-16;
Gene ID	11345
mRNA Refseq	NM_007285
Protein Refseq	NP_009216
MIM	607452
UniProt ID	P60520

 Tel: 1-631-559-9269 1-516-512-3133

 Email: info@creative-biomart.com  Fax: 1-631-938-8127

 45-1 Ramsey Road, Shirley, NY 11967, USA

SDS-PAGE



 Tel: 1-631-559-9269 1-516-512-3133

 Email: info@creative-biomart.com  Fax: 1-631-938-8127

 45-1 Ramsey Road, Shirley, NY 11967, USA