

Recombinant Human GABARAPL2 protein, His-tagged

Cat. No. GABARAPL2-9652H Lot. No. (See product label)

SPECIFICATION

Product Overview	Recombinant Human GABARAPL2 protein(P60520)(132aa), fused with N-terminal His tag, was expressed in E. coli.
Species	Human
Source	E.coli
Protein Length	132aa(including fusion tag)
Tag	N-His
Form	20mM Tris.Cl, 50mM NaCl, 50% Glycerol, pH8.0.
Molecular Mass	15.6kDa(including fusion tag)
Storage	Store at -80°C and avoid repeated freeze-thaw cycles.
Reconstitution	It is recommended that sterile water be added to the vial to prepare a stock solution of 0.2 ug/ul. Centrifuge the vial at 4°C before opening to recover the entire contents.

GENE INFORMATION

Gene Name	GABARAPL2 GABA(A) receptor-associated protein-like 2 [Homo sapiens]
Official Symbol	GABARAPL2

 Tel: 1-631-559-9269 1-516-512-3133

 Email: info@creative-biomart.com  Fax: 1-631-938-8127

 45-1 Ramsey Road, Shirley, NY 11967, USA

Synonyms GABARAPL2; GABA(A) receptor-associated protein-like 2; gamma-aminobutyric acid receptor-associated protein-like 2; ATG8; ATG8C; GATE 16; GATE16; GEF2; ganglioside expression factor 2; MAP1 light chain 3 related protein; MAP1 light chain 3-related protein; general protein transport factor p16; golgi-associated ATPase enhancer of 16 kDa; GEF-2; GATE-16;

Gene ID [11345](#)

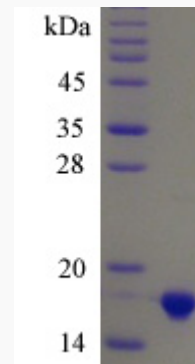
mRNA Refseq [NM_007285](#)

Protein Refseq [NP_009216](#)

MIM [607452](#)

UniProt ID [P60520](#)

SDS-PAGE



 Tel: 1-631-559-9269 1-516-512-3133

 Email: info@creative-biomart.com  Fax: 1-631-938-8127

 45-1 Ramsey Road, Shirley, NY 11967, USA