

Recombinant Human GABRA6 Protein, GST-tagged

Cat. No. GABRA6-4643H **Lot. No.** (See product label)

SPECIFICATION

Product Overview	Human GABRA6 full-length ORF (NP_000802.1, 1 a.a. - 453 a.a.) recombinant protein with GST-tag at N-terminal.
Species	Human
Source	Wheat Germ
Description	GABA is the major inhibitory neurotransmitter in the mammalian brain where it acts at GABA-A receptors, which are ligand-gated chloride channels. Chloride conductance of these channels can be modulated by agents such as benzodiazepines that bind to the GABA-A receptor. At least 16 distinct subunits of GABA-A receptors have been identified. [provided by RefSeq]
Molecular Mass	77.4 kDa
AA Sequence	<p>MASSLPWLCIILWLENALGKLEVEGNFYSENVSRILDNLLEGYDNRLRPGFGGAVTE VKTDIYVTSFGPVSVDVEMEYTMDFFRQQTWDERLKFGGPTEILSLNNLMVSKIWTP DTFFRNGKKSIAHNMTTPNKLFRIMQNGTILYTMRLTINADCPMRLVNFPMGDHACP LKFGSYAYPKSEIITWKKGPLYSVEVPEESSLLQYDLIGQTVSSETIKSNTGEYVIM TVYFHLQRKMGYFMIQIYTPCIMTVILSQVSFWINKESVPARTVFGITTVLTMTTLSISA RHSLPKVSYATAMDWFIAVCFVFSALIEFAAVNYFTNLQTQKAKRKAQFAAPPTV TISKATEPLEAEIVLHPDSKYHLKKRITSLSLPIVSSSEANKVLTRAPILQSTPVTTPPLS PAFGGTSKIDQYSRILFPVAFAGFNLVYVVVYLSKDTMEVSSSVE</p>
Applications	Enzyme-linked Immunoabsorbent Assay

 Tel: 1-631-559-9269 1-516-512-3133

 Email: info@creative-biomart.com  Fax: 1-631-938-8127

 45-1 Ramsey Road, Shirley, NY 11967, USA

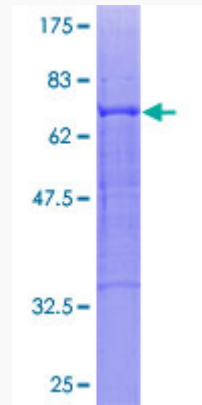
	Western Blot (Recombinant protein) Antibody Production Protein Array
Notes	Best use within three months from the date of receipt of this protein.
Storage	Store at -80 centigrade. Aliquot to avoid repeated freezing and thawing.
Storage Buffer	50 mM Tris-HCl, 10 mM reduced Glutathione, pH=8.0 in the elution buffer.
GENE INFORMATION	
Gene Name	GABRA6 gamma-aminobutyric acid (GABA) A receptor, alpha 6 [Homo sapiens]
Official Symbol	GABRA6
Synonyms	GABRA6; gamma-aminobutyric acid (GABA) A receptor, alpha 6; gamma-aminobutyric acid receptor subunit alpha-6; GABA(A) receptor; alpha 6; GABA(A) receptor, alpha 6; GABA subunit A receptor alpha 6; GABA(A) receptor subunit alpha-6; MGC116903; MGC116904;
Gene ID	2559
mRNA Refseq	NM_000811
Protein Refseq	NP_000802
MIM	137143
UniProt ID	Q16445

 Tel: 1-631-559-9269 1-516-512-3133

 Email: info@creative-biomart.com  Fax: 1-631-938-8127

 45-1 Ramsey Road, Shirley, NY 11967, USA

**Quality Control
Testing**



12.5% SDS-PAGE Stained with Coomassie Blue.

 Tel: 1-631-559-9269 1-516-512-3133

 Email: info@creative-biomart.com  Fax: 1-631-938-8127

 45-1 Ramsey Road, Shirley, NY 11967, USA