

Recombinant Human GAD1 Protein, GST-tagged

Cat. No. GAD1-4653H Lot. No. (See product label)

SPECIFICATION

Product Overview	Human GAD1 full-length ORF (AAH26349, 1 a.a. - 594 a.a.) recombinant protein with GST-tag at N-terminal.
Species	Human
Source	Wheat Germ
Description	<p>This gene encodes one of several forms of glutamic acid decarboxylase, identified as a major autoantigen in insulin-dependent diabetes. The enzyme encoded is responsible for catalyzing the production of gamma-aminobutyric acid from L-glutamic acid. A pathogenic role for this enzyme has been identified in the human pancreas since it has been identified as an autoantigen and an autoreactive T cell target in insulin-dependent diabetes. This gene may also play a role in the stiff man syndrome. Deficiency in this enzyme has been shown to lead to pyridoxine dependency with seizures. Alternative splicing of this gene results in two products, the predominant 67-kD form and a less-frequent 25-kD form. [provided by RefSeq</p>
Molecular Mass	91.08 kDa
AA Sequence	<p>MASSTPSSSATSSNAGADPNTTNLRPTTYDTWCGVAHGCTRKLGKICGFLQRTNS LEEKSRLVSAFKERQSSKNLLSCENS DRDARFRRTETDFS NLFARDLLPAKNGEEQ TVQFLLEVVDILLNYVRKTFDRSTKVLDFHHPHQLLLEGMEGFNLELS DHPESLEQILV DCRDTLKYGVRTGHP RFFNQLSTGLDIIGLAGEWLTSTANTNMFTYEIAPV FVLMEQI TLKKMREIVGWSSKDG DGIFSPGG AISNMYSIMAARYKYFPEVKTKGMAAVPKLVLF</p>

 Tel: 1-631-559-9269 1-516-512-3133

 Email: info@creative-biomart.com  Fax: 1-631-938-8127

 45-1 Ramsey Road, Shirley, NY 11967, USA

TSEQSHYSIKKAGAALGFGTDNVILIKCNERGKIIPADFEAKILEAKQKGYVPFYVNAT
 AGTTYGAFDPIQEIADICEKYNLWLHVDAAWGGGLLSMRKHRHKLNGIERANSVT
 WNPBKMMGVLLQCSAILVKEKGILQGCNQMCAGYLFQPKQYDVSYDTGDKAIQC
 GRHVDIFKFWLMWKAKGTVGFENQINKCLELAEYLYAKIKNREEFEMVFNGEPEHT
 NVCFWYIPQSLRGVPDSPQRREKLHKVAPKIKALMMESGTTMVGYPQGDKANFF
 RMVISNPAATQSDIDFLIEEIERLGQDL

Applications	Enzyme-linked Immunoabsorbent Assay Western Blot (Recombinant protein) Antibody Production Protein Array
Notes	Best use within three months from the date of receipt of this protein.
Storage	Store at -80 centigrade. Aliquot to avoid repeated freezing and thawing.
Storage Buffer	50 mM Tris-HCl, 10 mM reduced Glutathione, pH=8.0 in the elution buffer.

GENE INFORMATION

Gene Name	GAD1 glutamate decarboxylase 1 (brain, 67kDa) [Homo sapiens]
Official Symbol	GAD1
Synonyms	GAD1; glutamate decarboxylase 1 (brain, 67kDa); GAD, glutamate decarboxylase 1 (brain, 67kD); glutamate decarboxylase 1; GAD-67; 67 kDa glutamic acid decarboxylase; glutamate decarboxylase 67 kDa isoform; GAD; SCP; CPSQ1; FLJ45882;
Gene ID	2571

 Tel: 1-631-559-9269 1-516-512-3133

 Email: info@creative-biomart.com  Fax: 1-631-938-8127

 45-1 Ramsey Road, Shirley, NY 11967, USA

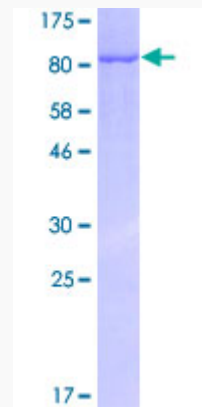
mRNA Refseq [NM_000817](#)

Protein Refseq [NP_000808](#)

MIM [605363](#)

UniProt ID [Q99259](#)

**Quality Control
Testing**



12.5% SDS-PAGE Stained with Coomassie Blue.

 Tel: 1-631-559-9269 1-516-512-3133

 Email: info@creative-biomart.com  Fax: 1-631-938-8127

 45-1 Ramsey Road, Shirley, NY 11967, USA