

Recombinant Human GADD45G Protein, His-tagged

Cat. No. GADD45G-1559H Lot. No. (See product label)

SPECIFICATION

Product Overview	Recombinant Human GADD45G Protein (Met1-Glu159) with N-His tag was expressed in E. coli.
Species	Human
Source	E.coli
ProteinLength	Met1-Glu159
Description	This gene is a member of a group of genes whose transcript levels are increased following stressful growth arrest conditions and treatment with DNA-damaging agents. The protein encoded by this gene responds to environmental stresses by mediating activation of the p38/JNK pathway via MTK1/MEKK4 kinase. The GADD45G is highly expressed in placenta.
Form	Freeze-dried powder
Molecular Mass	Predicted Molecular Mass: 21.0 kDa Accurate Molecular Mass: 24 kDa
Purity	> 97%
Applications	Positive Control; Immunogen; SDS-PAGE; WB.
Stability	The thermal stability is described by the loss rate. The loss rate was determined by

 Tel: 1-631-559-9269 1-516-512-3133

 Email: info@creative-biomart.com  Fax: 1-631-938-8127

 45-1 Ramsey Road, Shirley, NY 11967, USA

accelerated thermal degradation test, that is, incubate the protein at 37 centigrade for 48h, and no obvious degradation and precipitation were observed. The loss rate is less than 5% within the expiration date under appropriate storage condition.

Storage

Avoid repeated freeze/thaw cycles. Store at 2-8 centigrade for one month. Aliquot and store at -80 centigrade for 12 months.

Storage Buffer

20mM Tris, 150mM NaCl, pH8.0, containing 1mM EDTA, 1mM DTT, 0.01% SKL, 5% Trehalose and Proclin300.

Reconstitution

Reconstitute in 20mM Tris, 150mM NaCl (pH8.0) to a concentration of 0.1-1.0 mg/mL. Do not vortex.

GENE INFORMATION

Gene Name

[GADD45G growth arrest and DNA-damage-inducible, gamma \[Homo sapiens \(human\) \]](#)

Official Symbol

[GADD45G](#)

Synonyms

GADD45G; growth arrest and DNA-damage-inducible, gamma; growth arrest and DNA damage-inducible protein GADD45 gamma; CR6; DDIT2; gadd related protein; 17 kD; GADD45gamma; growth arrest and DNA damage inducible gamma; GRP17; DDIT-2; GADD45-gamma; gadd-related protein, 17 kD; cytokine-responsive protein CR6; DNA damage-inducible transcript 2 protein;

Gene ID

[10912](#)

mRNA Refseq

[NM_006705](#)

Protein Refseq

[NP_006696](#)

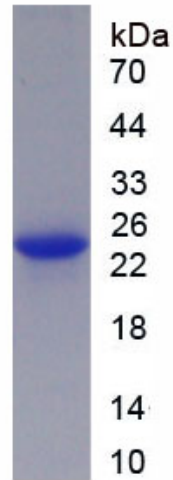
 Tel: 1-631-559-9269 1-516-512-3133

 Email: info@creative-biomart.com  Fax: 1-631-938-8127

 45-1 Ramsey Road, Shirley, NY 11967, USA

MIM 604949

UniProt ID O95257



Tel: 1-631-559-9269 1-516-512-3133

Email: info@creative-biomart.com Fax: 1-631-938-8127

45-1 Ramsey Road, Shirley, NY 11967, USA