

Recombinant Human GADD45G Protein, GST-tagged

Cat. No. GADD45G-4660H Lot. No. (See product label)

SPECIFICATION

Product Overview	Human GADD45G full-length ORF (AAH19325, 1 a.a. - 159 a.a.) recombinant protein with GST-tag at N-terminal.
Species	Human
Source	Wheat Germ
Description	This gene is a member of a group of genes whose transcript levels are increased following stressful growth arrest conditions and treatment with DNA-damaging agents. The protein encoded by this gene responds to environmental stresses by mediating activation of the p38/JNK pathway via MTK1/MEKK4 kinase. The GADD45G is highly expressed in placenta. [provided by RefSeq]
Molecular Mass	43.23 kDa
AA Sequence	MTLEEVRGQDTVPESTARMQGAGKALHELLLSAQRQGCLTAGVYESAKVLNVDPD NVTFCVLAAGEEDEGDIALQIHFTLIQAFCCENDIDIVRVGDVQRLAAIVGAGEEAGAP GDLHCILISNPNEAWKDPALKLSLFCESRSVNDWVPSITLPE
Applications	Enzyme-linked Immunoabsorbent Assay Western Blot (Recombinant protein) Antibody Production Protein Array
Notes	Best use within three months from the date of receipt of this protein.

 Tel: 1-631-559-9269 1-516-512-3133

 Email: info@creative-biomart.com  Fax: 1-631-938-8127

 45-1 Ramsey Road, Shirley, NY 11967, USA

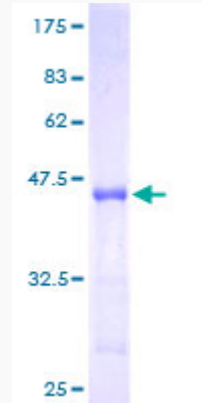
Storage	Store at -80 centigrade. Aliquot to avoid repeated freezing and thawing.
Storage Buffer	50 mM Tris-HCl, 10 mM reduced Glutathione, pH=8.0 in the elution buffer.
GENE INFORMATION	
Gene Name	GADD45G growth arrest and DNA-damage-inducible, gamma [Homo sapiens]
Official Symbol	GADD45G
Synonyms	GADD45G; growth arrest and DNA-damage-inducible, gamma; growth arrest and DNA damage-inducible protein GADD45 gamma; CR6; DDIT2; gadd related protein; 17 kD; GADD45gamma; growth arrest and DNA damage inducible gamma; GRP17; DDIT-2; GADD45-gamma; gadd-related protein, 17 kD; cytokine-responsive protein CR6; DNA damage-inducible transcript 2 protein;
Gene ID	10912
mRNA Refseq	NM_006705
Protein Refseq	NP_006696
MIM	604949
UniProt ID	O95257

 Tel: 1-631-559-9269 1-516-512-3133

 Email: info@creative-biomart.com  Fax: 1-631-938-8127

 45-1 Ramsey Road, Shirley, NY 11967, USA

**Quality Control
Testing**



12.5% SDS-PAGE Stained with Coomassie Blue.

 Tel: 1-631-559-9269 1-516-512-3133

 Email: info@creative-biomart.com  Fax: 1-631-938-8127

 45-1 Ramsey Road, Shirley, NY 11967, USA