

Recombinant Human GADD45G Protein, Myc/DDK-tagged, C13 and N15-labeled

Cat. No. GADD45G-955H Lot. No. (See product label)

SPECIFICATION

Product Overview	GADD45G MS Standard C13 and N15-labeled recombinant protein (NP_006696) with a C-terminal MYC/DDK tag, was expressed in HEK293 cells.
Species	Human
Source	HEK293
Description	This gene is a member of a group of genes whose transcript levels are increased following stressful growth arrest conditions and treatment with DNA-damaging agents. The protein encoded by this gene responds to environmental stresses by mediating activation of the p38/JNK pathway via MTK1/MEKK4 kinase. The GADD45G is highly expressed in placenta.
Molecular Mass	17.1 kDa
AA Sequence	MTLEEVRGQDTVPESTARMQGAGKALHELLLSAQRQGCLTAGVYESAKVLNVDPD NVTFCVLAAGEEDEGDIALQIHFTLIQAFCCENDIDIVRVGDVQRLAAIVGAGEEAGAP GDLHCILISNPNEAWKDPALKLSLFCEESRSVNDWVPSITLPETRTRPPELQKLISE EDLAANDILDYKDDDDKV
Purity	> 80% as determined by SDS-PAGE and Coomassie blue staining
Stability	Stable for 3 months from receipt of products under proper storage and handling conditions.

 Tel: 1-631-559-9269 1-516-512-3133

 Email: info@creative-biomart.com  Fax: 1-631-938-8127

 45-1 Ramsey Road, Shirley, NY 11967, USA

Storage	Store at -80 centigrade. Avoid repeated freeze-thaw cycles.
Concentration	50 µg/mL as determined by BCA
Storage Buffer	100 mM glycine, 25 mM Tris-HCl, pH 7.3.

GENE INFORMATION

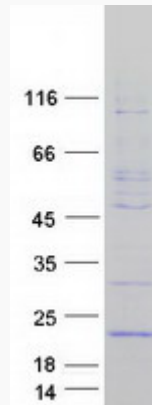
Gene Name	GADD45G growth arrest and DNA damage inducible gamma [Homo sapiens (human)]
Official Symbol	GADD45G
Synonyms	GADD45G; growth arrest and DNA-damage-inducible, gamma; growth arrest and DNA damage-inducible protein GADD45 gamma; CR6; DDIT2; gadd related protein; 17 kD; GADD45gamma; growth arrest and DNA damage inducible gamma; GRP17; DDIT-2; GADD45-gamma; gadd-related protein, 17 kD; cytokine-responsive protein CR6; DNA damage-inducible transcript 2 protein;
Gene ID	10912
mRNA Refseq	NM_006705
Protein Refseq	NP_006696
MIM	604949
UniProt ID	O95257

 Tel: 1-631-559-9269 1-516-512-3133

 Email: info@creative-biomart.com  Fax: 1-631-938-8127

 45-1 Ramsey Road, Shirley, NY 11967, USA

SDS-PAGE



 Tel: 1-631-559-9269 1-516-512-3133

 Email: info@creative-biomart.com  Fax: 1-631-938-8127

 45-1 Ramsey Road, Shirley, NY 11967, USA