

## Recombinant Human GADD45GIP1 Protein, GST-tagged

**Cat. No.** GADD45GIP1-4661H    **Lot. No.** (See product label)

### SPECIFICATION

<b>Product Overview</b>	Human GADD45GIP1 full-length ORF ( NP_443082.2, 1 a.a. - 222 a.a.) recombinant protein with GST-tag at N-terminal.
<b>Species</b>	Human
<b>Source</b>	Wheat Germ
<b>Description</b>	This gene encodes a nuclear-localized protein that may be induced by p53 and regulates the cell cycle by inhibiting G1 to S phase progression. The encoded protein may interact with other cell cycle regulators. [provided by RefSeq, Aug 2012]
<b>Molecular Mass</b>	51.8 kDa
<b>AA Sequence</b>	MAASVRQARSLLGVAATLAPGSRGYRARPPPPRRRPGPRWDPEDLLTPRWQLGP RYAAKQFARYGAASGVVPGSLWPSPEQLRELEAEEREWYPSLATMQESLRVKQLA EEQKRREREREQHIAECMAKMPQMIVNWQQQQRENWEKAQADKERRARLQAEAQEL LGYQVDPRSARFQELLQDLEKKERKRLKEEKQKRKKEARAAALAAVAQDPAASGA PSS
<b>Applications</b>	Enzyme-linked Immunoabsorbent Assay Western Blot (Recombinant protein) Antibody Production Protein Array
<b>Notes</b>	Best use within three months from the date of receipt of this protein.

 Tel: 1-631-559-9269    1-516-512-3133

 Email: [info@creative-biomart.com](mailto:info@creative-biomart.com)     Fax: 1-631-938-8127

 45-1 Ramsey Road, Shirley, NY 11967, USA

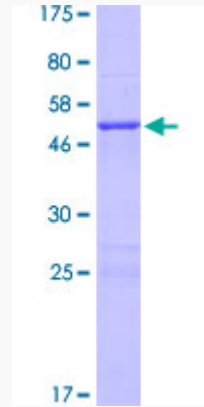
<b>Storage</b>	Store at -80 centigrade. Aliquot to avoid repeated freezing and thawing.
<b>Storage Buffer</b>	50 mM Tris-HCl, 10 mM reduced Glutathione, pH=8.0 in the elution buffer.
<b>GENE INFORMATION</b>	
<b>Gene Name</b>	GADD45GIP1 growth arrest and DNA-damage-inducible, gamma interacting protein 1 [ Homo sapiens ]
<b>Official Symbol</b>	GADD45GIP1
<b>Synonyms</b>	GADD45GIP1; growth arrest and DNA-damage-inducible, gamma interacting protein 1; growth arrest and DNA damage-inducible proteins-interacting protein 1; CKBBP2; CKII beta binding protein 2; CR6 interacting factor 1; CRIF1; MGC4667; MGC4758; p53 responsive gene 6; papillomavirus L2 interacting nuclear protein 1; PLINP 1; Plinp1; PRG6; CR6-interacting factor 1; CKII beta-associating protein; p53-responsive gene 6 protein; papillomavirus L2-interacting nuclear protein 1; PLINP-1;
<b>Gene ID</b>	90480
<b>mRNA Refseq</b>	NM_052850
<b>Protein Refseq</b>	NP_443082
<b>MIM</b>	605162
<b>UniProt ID</b>	Q8TAE8

 Tel: 1-631-559-9269 1-516-512-3133

 Email: [info@creative-biomart.com](mailto:info@creative-biomart.com)  Fax: 1-631-938-8127

 45-1 Ramsey Road, Shirley, NY 11967, USA

**Quality Control  
Testing**



12.5% SDS-PAGE Stained with Coomassie Blue.

 Tel: 1-631-559-9269 1-516-512-3133

 Email: [info@creative-biomart.com](mailto:info@creative-biomart.com)  Fax: 1-631-938-8127

 45-1 Ramsey Road, Shirley, NY 11967, USA