

## Recombinant Human GAGE5 Protein, GST-tagged

Cat. No. GAGE5-4666H Lot. No. (See product label)

### SPECIFICATION

<b>Product Overview</b>	Human GAGE5 partial ORF ( NP_001466.1, 28 a.a. - 117 a.a.) recombinant protein with GST-tag at N-terminal.
<b>Species</b>	Human
<b>Source</b>	Wheat Germ
<b>Description</b>	This gene belongs to a family of genes that are expressed in a variety of tumors but not in normal tissues, except for the testis. The sequences of the family members are highly related but differ by scattered nucleotide substitutions. The antigenic peptide YYWPRPRRY, which is also encoded by several other family members, is recognized by autologous cytolytic T lymphocytes. [provided by RefSeq]
<b>Molecular Mass</b>	35.64 kDa
<b>AA Sequence</b>	RPEQFSDEVEPATPEEGEPATQRQDPAAAQEGEDEGASAGQGPKPEADSQEQQH PQTGCECEDGPDGQEMDPPNPEEVKTPEEGEKQSQC
<b>Applications</b>	Enzyme-linked Immunoabsorbent Assay Western Blot (Recombinant protein) Antibody Production Protein Array
<b>Notes</b>	Best use within three months from the date of receipt of this protein.

 Tel: 1-631-559-9269 1-516-512-3133

 Email: [info@creative-biomart.com](mailto:info@creative-biomart.com)  Fax: 1-631-938-8127

 45-1 Ramsey Road, Shirley, NY 11967, USA

**Storage** Store at -80 centigrade. Aliquot to avoid repeated freezing and thawing.

**Storage Buffer** 50 mM Tris-HCl, 10 mM reduced Glutathione, pH=8.0 in the elution buffer.

## GENE INFORMATION

**Gene Name** GAGE5 G antigen 5 [ Homo sapiens ]

**Official Symbol** GAGE5

**Synonyms** GAGE5; G antigen 5; cancer/testis antigen family 4; member 5; CT4.5; GAGE-5; cancer/testis antigen 4.5; cancer/testis antigen family 4, member 5;

**Gene ID** 2577

**mRNA Refseq** NM\_001475

**Protein Refseq** NP\_001466

**MIM** 300598

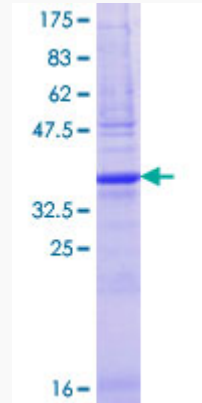
**UniProt ID** Q13069

 Tel: 1-631-559-9269 1-516-512-3133

 Email: [info@creative-biomart.com](mailto:info@creative-biomart.com)  Fax: 1-631-938-8127

 45-1 Ramsey Road, Shirley, NY 11967, USA

**Quality Control  
Testing**



12.5% SDS-PAGE Stained with Coomassie Blue.

 Tel: 1-631-559-9269 1-516-512-3133

 Email: [info@creative-biomart.com](mailto:info@creative-biomart.com)  Fax: 1-631-938-8127

 45-1 Ramsey Road, Shirley, NY 11967, USA