

Recombinant Human GAL Protein, GST-tagged

Cat. No. GAL-4671H **Lot. No.** (See product label)

SPECIFICATION

Product Overview	Human GAL full-length ORF (AAH30241, 1 a.a. - 123 a.a.) recombinant protein with GST-tag at N-terminal.
Species	Human
Source	Wheat Germ
Description	Galanin is small neuropeptide that functions as a cellular messenger within the central and peripheral nervous systems, modulating diverse physiologic functions (Mechenthaler, 2008 [PubMed 18500643]).[supplied by OMIM
Molecular Mass	39.27 kDa
AA Sequence	MARGSALLLASLLLAALSASAGLWSPAKEKRGWTLNSAGYLLGPHAVGNHRFSFD KNGLTSKRELRPEDDMKPGSFDRSIPENNIMRTIIEFLSFLHLKEAGALDRLLDLPAAA SSEDIERS
Applications	Enzyme-linked Immunoabsorbent Assay Western Blot (Recombinant protein) Antibody Production Protein Array
Notes	Best use within three months from the date of receipt of this protein.
Storage	Store at -80 centigrade. Aliquot to avoid repeated freezing and thawing.

 Tel: 1-631-559-9269 1-516-512-3133

 Email: info@creative-biomart.com  Fax: 1-631-938-8127

 45-1 Ramsey Road, Shirley, NY 11967, USA

Storage Buffer 50 mM Tris-HCl, 10 mM reduced Glutathione, pH=8.0 in the elution buffer.

GENE INFORMATION

Gene Name GAL galanin prepropeptide [Homo sapiens]

Official Symbol GAL

Synonyms GAL; galanin prepropeptide; galanin, GALN; galanin peptides; galanin message associated peptide; GLNN; GMAP; galanin-related peptide; galanin-message-associated peptide; GALN; MGC40167;

Gene ID 51083

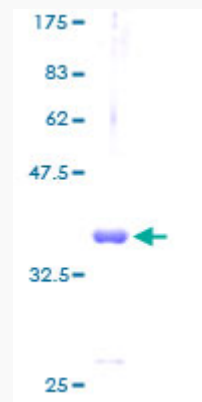
mRNA Refseq NM_015973

Protein Refseq NP_057057

MIM 137035

UniProt ID P22466

Quality Control Testing



Tel: 1-631-559-9269 1-516-512-3133

Email: info@creative-biomart.com Fax: 1-631-938-8127

45-1 Ramsey Road, Shirley, NY 11967, USA



12.5% SDS-PAGE Stained with Coomassie Blue.

 Tel: 1-631-559-9269 1-516-512-3133

 Email: info@creative-biomart.com  Fax: 1-631-938-8127

 45-1 Ramsey Road, Shirley, NY 11967, USA