

Recombinant Human GALC Protein (43-685 aa), His-tagged

Cat. No. GALC-1844H Lot. No. (See product label)

SPECIFICATION

Product Overview	Recombinant Human GALC Protein (43-685 aa) is produced by Yeast expression system. This protein is fused with a 6xHis tag at the N-terminal. Research Area: Cardiovascular. Protein Description: Full Length of Mature Protein.
Species	Human
Source	Yeast
ProteinLength	43-685 aa
Description	Hydrolyzes the galactose ester bonds of galactosylceramide, galactosylsphingosine, lactosylceramide, and monogalactosyldiglyceride. Enzyme with very low activity responsible for the lysosomal catabolism of galactosylceramide, a major lipid in myelin, kidney and epithelial cells of small intestine and colon.
Form	Tris-based buffer,50% glycerol
Molecular Mass	74.8 kDa
AA Sequence	YVLDDSDGLGREFDGIGAVSGGGATSRLLVNYPEPYRSQILDYLFKPNFGASLHILKV EIGGDGQTTDGTPEPSHMHYALDENYFRGYEWWLMKEAKKRNPNITLIGLPWSFPG WLGKGFDPYVNLQLTAYYVVTWIVGAKRYHDLDDIDYIGIWNERSYNANYIKILRKML NYQGLQRVKIIASDNLWESISASMLLDAELFKVVDVIGAHYPGTHSAKDAKLTGKKL WSEDFSTLNSDMGAGCWGRILNQNYINGYMTSTIAWNLVASYEQLPYGRCGLM TAQEPWSGHYVVEPVVWSAHTTQFTQPGWYYLKTGVGHLEKGGSYVALTDGLGNL

 Tel: 1-631-559-9269 1-516-512-3133

 Email: info@creative-biomart.com  Fax: 1-631-938-8127

 45-1 Ramsey Road, Shirley, NY 11967, USA



TIIETMSHKHSCIRPFLPYFNVSQQFATFVLKGSFSEIPELQVWYTKLGKTSERFLF
 KQLDSLWLLDSDGSFTLSLHEDELFTLTTLTGRKGSYPLPPKSQFPSTYKDDFNV
 DYPFFSEAPNFADQTVFEYFTNIEDPGEHHFTLRQVLNQRPIWAAASNTISIIGD
 YNWTNLTIKCDVYIETPDTGGVFIAGRNVKGGILIRSARGIFFWIFANGSYRVTGDLAG
 WIIYALGRVEVTAKKWYTLTLTIKGFASGMLNDKSLWTDIPVNFPPKNGWAAIGTHSF
 EFAQFDNFLVEATR

Purity > 90% as determined by SDS-PAGE.

Notes Repeated freezing and thawing is not recommended. Store working aliquots at 4 centigrade for up to one week.

Storage The shelf life is related to many factors, storage state, buffer ingredients, storage temperature and the stability of the protein itself. Generally, the shelf life of liquid form is 6 months at -20 centigrade/-80 centigrade. The shelf life of lyophilized form is 12 months at -20 centigrade/-80 centigrade.

Concentration A hardcopy of COA with reconstitution instruction is sent along with the products.

GENE INFORMATION

Gene Name [GALC galactosylceramidase \[Homo sapiens \]](#)

Official Symbol [GALC](#)

Synonyms GALC; galactosylceramidase; galactocerebrosidase; Krabbe disease; GALCERase;

Gene ID [2581](#)

mRNA Refseq [NM_000153](#)

Tel: 1-631-559-9269 1-516-512-3133

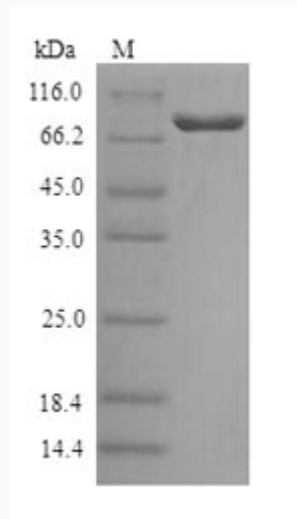
Email: info@creative-biomart.com Fax: 1-631-938-8127

45-1 Ramsey Road, Shirley, NY 11967, USA

Protein Refseq NP_000144

MIM 606890

UniProt ID P54803



(Tris-Glycine gel) Discontinuous SDS-PAGE (reduced) with 5% enrichment gel and 15% separation gel.

 Tel: 1-631-559-9269 1-516-512-3133

 Email: info@creative-biomart.com  Fax: 1-631-938-8127

 45-1 Ramsey Road, Shirley, NY 11967, USA