

Recombinant Human GALC protein

Cat. No. GALC-6743H Lot. No. (See product label)

SPECIFICATION

Product Overview	Recombinant Human GALC protein(P54803)(43-685aa) was expressed in vitro E.coli expression system.
Species	Human
Source	E.coli
ProteinLength	43-685aa
Tag	Non
Form	If the delivery form is liquid, the default storage buffer is Tris/PBS-based buffer, 5%-50% glycerol. If the delivery form is lyophilized powder, the buffer before lyophilization is Tris/PBS-based buffer, 6% Trehalose, pH 8.0.
Molecular Mass	73.0 kDa
Purity	Greater than 85% as determined by SDS-PAGE.
Storage	Store at -20°C/-80°C upon receipt, aliquoting is necessary for mutiple use. Avoid repeated freeze-thaw cycles.
Reconstitution	We recommend that this vial be briefly centrifuged prior to opening to bring the contents to the bottom. Please reconstitute protein in deionized sterile water to a concentration of 0.1-1.0 mg/mL.We recommend to add 5-50% of glycerol (final

 Tel: 1-631-559-9269 1-516-512-3133

 Email: info@creative-biomart.com  Fax: 1-631-938-8127

 45-1 Ramsey Road, Shirley, NY 11967, USA

concentration) and aliquot for long-term storage at -20°C/-80°C.

AA Sequence

YVLDDSDGLGREFDGIGAVSGGGATSRLLVNYPEPYRSQILDYLFKPNFGASLHILKV
 EIGGDGQTTDGTPEPSHMHYALDENYFRGYEWWLMKEAKKRNPNTLIGLPWSFPG
 WLKGFDPWPYVNLQLTAYYVVTWIVGAKRYHDLDDIDYIGIWNERSYNANYIKILRKML
 NYQGLQRVKIIASDNLWESISASMLLDAELFKVVDVIGAHYPGTHSAKDAKLTGKKL
 WSSDFSTLNSDMGAGCWGRILNQNYINGYMTSTIAWNLVASYEQLPYGRCGLM
 TAQEPWSGHYVVEPWWSAHTTQFTQPGWYYLKTIVGHLEKGGSYVALTDGLGNL
 TIIETMSHKHSCIRPFLPYFNVSQQFATFVLKGSFSEIPELQVWYTKLGKTSERFLF
 KQLDSLWLLDSDGSFTLSLHEDELFTLTTLTGRKGSYPLPPKSQFPSTYKDDFNV
 DYPFFSEAPNFADQTVFEYFTNIEDPGEHHFTLRQVLNQRPIITWAADASNTISIIGD
 YNWTNLTIKCDVYIETPDTGGVFIAGRNVKGGILIRSARGIFFWIFANGSYRVTGDLAG
 WIIYALGRVEVTAKKWYTLTLTIKGHFTSGMLNDKSLWTDIPVNFPKNGWAAIGTHSF
 EFAQFDNFLVEATR

GENE INFORMATION

Gene Name [GALC galactosylceramidase \[Homo sapiens \]](#)

Official Symbol [GALC](#)

Synonyms [GALC](#); galactosylceramidase; galactosylceramidase (Krabbe disease); galactocerebrosidase; Krabbe disease; GALCERase; galactosylceraminidase; galactocerebroside beta-galactosidase; galactosylceramide beta-galactosidase;

Gene ID [2581](#)

mRNA Refseq [NM_000153](#)

Protein Refseq [NP_000144](#)

 Tel: 1-631-559-9269 1-516-512-3133

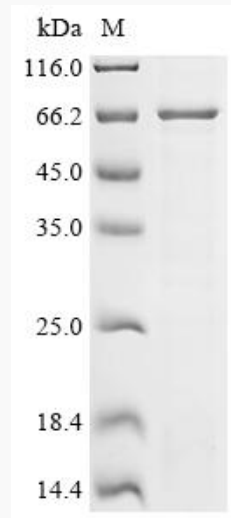
 Email: info@creative-biomart.com  Fax: 1-631-938-8127

 45-1 Ramsey Road, Shirley, NY 11967, USA

MIM 606890

UniProt ID P54803

SDS-PAGE



 Tel: 1-631-559-9269 1-516-512-3133

 Email: info@creative-biomart.com  Fax: 1-631-938-8127

 45-1 Ramsey Road, Shirley, NY 11967, USA