

Recombinant Human GALE Protein (Met1-Ala348), N-His tagged

Cat. No. GALE-2398H Lot. No. (See product label)

SPECIFICATION

Product Overview	Recombinant human GALE (Met1-Ala348) protein fused with the N-terminal His tag was expressed in E. coli.
Species	Human
Source	E.coli
ProteinLength	Met1-Ala348
Molecular Mass	38.28 kDa
Purity	>90 % as determined by SDS-PAGE.
Notes	For research use only.
Storage	Use a manual defrost freezer and avoid repeated freeze thaw cycles. Store at 2 to 8 centigrade for one week. Store at -20 to -80 centigrade for twelve months from the date of receipt.
Storage Buffer	Supplied as solution form in PBS or lyophilized from PBS.
Reconstitution	Reconstitute in sterile water for a stock solution.
Shipping	In general, proteins are provided as lyophilized powder/frozen liquid. They are

 Tel: 1-631-559-9269 1-516-512-3133

 Email: info@creative-biomart.com  Fax: 1-631-938-8127

 45-1 Ramsey Road, Shirley, NY 11967, USA

shipped out with dry ice/blue ice unless customers require otherwise.

GENE INFORMATION

Gene Name [GALE UDP-galactose-4-epimerase \[Homo sapiens \(human\) \]](#)

Official Symbol [GALE](#)

Synonyms [GALE](#); [UDP-galactose-4-epimerase](#); [galactose 4 epimerase, UDP](#); [UDP-glucose 4-epimerase](#); [SDR1E1](#); [short chain dehydrogenase/reductase family 1E; member 1](#); [UDP glucose 4 epimerase](#); [galactowaldenase](#); [UDP-galactose 4-epimerase](#); [UDP galactose-4-epimerase](#); [galactose-4-epimerase, UDP-](#); [short chain dehydrogenase/reductase family 1E, member 1](#); [FLJ95174](#); [FLJ97302](#);

Gene ID [2582](#)

mRNA Refseq [NM_000403](#)

Protein Refseq [NP_000394](#)

MIM [606953](#)

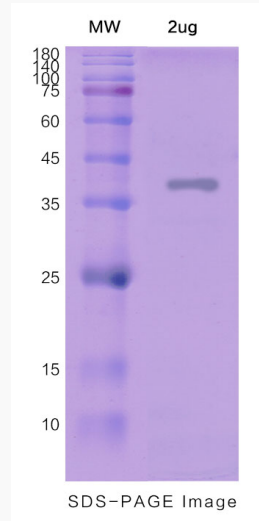
UniProt ID [Q14376](#)

 Tel: 1-631-559-9269 1-516-512-3133

 Email: info@creative-biomart.com  Fax: 1-631-938-8127

 45-1 Ramsey Road, Shirley, NY 11967, USA

SDS-PAGE



 Tel: 1-631-559-9269 1-516-512-3133

 Email: info@creative-biomart.com  Fax: 1-631-938-8127

 45-1 Ramsey Road, Shirley, NY 11967, USA