

Recombinant Human GALE Protein, GST-tagged

Cat. No. GALE-4679H Lot. No. (See product label)

SPECIFICATION

Product Overview	Human GALE full-length ORF (AAH01273, 1 a.a. - 348 a.a.) recombinant protein with GST-tag at N-terminal.
Species	Human
Source	Wheat Germ
Description	<p>This gene encodes UDP-galactose-4-epimerase which catalyzes two distinct but analogous reactions: the epimerization of UDP-glucose to UDP-galactose, and the epimerization of UDP-N-acetylglucosamine to UDP-N-acetylgalactosamine. The bifunctional nature of the enzyme has the important metabolic consequence that mutant cells (or individuals) are dependent not only on exogenous galactose, but also on exogenous N-acetylgalactosamine as a necessary precursor for the synthesis of glycoproteins and glycolipids. Mutations in this gene result in epimerase-deficiency galactosemia, also referred to as galactosemia type 3, a disease characterized by liver damage, early-onset cataracts, deafness and mental retardation, with symptoms ranging from mild (peripheral form) to severe (generalized form). Multiple alternatively spliced transcripts encoding the same protein have been identified. [provided by RefSeq]</p>
Molecular Mass	64.02 kDa
AA Sequence	MAEKVLVTGGAGYIGSHTVLELLEAGYLPVVIDNFHNAFRGGGSLPESLRRVQELTGRSVEFEEMDILDQGALQRLFKKYSFMAVIHFAGLKAVGESVQKPLDYRVNLTGTIQ

 Tel: 1-631-559-9269 1-516-512-3133

 Email: info@creative-biomart.com  Fax: 1-631-938-8127

 45-1 Ramsey Road, Shirley, NY 11967, USA

LLEIMKAHGVKNLVFSSSATVYGNPQYLPLDEAHPTGGCTNPYGKSKFFIEEMIRDL
 CQADKTWNAVLLRYFNPTGAHASGCIGEDPQGIPNNLMPYVSQVAIGRREALNVFG
 NDYDTEDEGTGVRDYIHVVDLAKGHIAALRKLKEQCQCRIYNLGTGTGYSVLQMVQA
 MEKASGKKIPYKVVARRREGDVAACYANPSLAQEELGWTAALGLDRMCEDLWRWQ
 KQNPSGFGTQA

Applications
 Enzyme-linked Immunoabsorbent Assay
 Western Blot (Recombinant protein)
 Antibody Production
 Protein Array

Notes Best use within three months from the date of receipt of this protein.

Storage Store at -80 centigrade. Aliquot to avoid repeated freezing and thawing.

Storage Buffer 50 mM Tris-HCl, 10 mM reduced Glutathione, pH=8.0 in the elution buffer.

GENE INFORMATION

Gene Name [GALE UDP-galactose-4-epimerase \[Homo sapiens \]](#)

Official Symbol [GALE](#)

Synonyms GALE; UDP-galactose-4-epimerase; galactose 4 epimerase, UDP; UDP-glucose 4-epimerase; SDR1E1; short chain dehydrogenase/reductase family 1E; member 1; UDP glucose 4 epimerase; galactowaldenase; UDP-galactose 4-epimerase; UDP galactose-4-epimerase; galactose-4-epimerase, UDP-; short chain dehydrogenase/reductase family 1E, member 1; FLJ95174; FLJ97302;

Gene ID [2582](#)

 Tel: 1-631-559-9269 1-516-512-3133

 Email: info@creative-biomart.com  Fax: 1-631-938-8127

 45-1 Ramsey Road, Shirley, NY 11967, USA

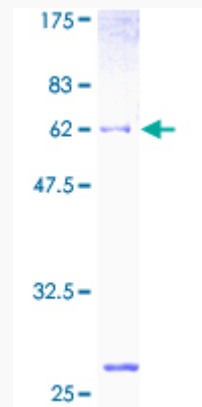
mRNA Refseq [NM_000403](#)

Protein Refseq [NP_000394](#)

MIM [606953](#)

UniProt ID [Q14376](#)

**Quality Control
Testing**



12.5% SDS-PAGE Stained with Coomassie Blue.

 Tel: 1-631-559-9269 1-516-512-3133

 Email: info@creative-biomart.com  Fax: 1-631-938-8127

 45-1 Ramsey Road, Shirley, NY 11967, USA