

Recombinant Human UDP-galactose-4-epimerase, His-tagged

Cat. No. GALE-731H **Lot. No.** (See product label)

SPECIFICATION

Product Overview Recombinant humanGALE protein, fused to His-tag at N-terminus, was expressed in *E.coli* and purified by using conventional chromatography techniques. MW = 40.4 kDa (368aa).

Species Human

Source E.coli

Description GALE, also known asUDP-glucose 4-epimeraes, is a protein that functions as the third enzyme in the Leloir pathway of galactose metabolism. It is a homodimeric epimerase found in bacterial, plant, and mammalian cells. This enzyme promotes the reverse chemical reaction, the conversion of UDP-glucose to UDP-galactose. UDP-galactose is used to build galactose-containing proteins and fats, which play critical roles in chemical signaling, building cellular structures, transporting molecules, and producing energy.

Sequences Of Amino Acids

MGSSHHHHHH SSGLVPRGSH MAEKVLVTGG AGYIGSHTVL ELLEAGYLPV
 VIDNFHNAFR GGGSLPESLR RVQELTGRSV EFEEMDILDQ GALQRLFKKY
 SFMAVIHFAG LKAVGESVQK PLDYRVNLT GTIQLLEIMK AHGVKNLVFS
 SSATVYGNPQ YLPLDEAHPT GGCTNPYGKS KFFIEEMIRD LCQADKTWNA
 VLLRYFNPTG AHASGCIGED PQGIPNNLMP YVSQVAIGRR EALNVFGNDY
 DTEDGTGVRD YIHVVDLAKG HIAALRKLKE QCGCRIYNLG TGTGYSVLQM
 VQAMEKASGK KIPYKVVARR EGDVAACYAN PSLAQEELGW TAALGLDRMC
 EDLWRWQKQN PSGFGTQA

 Tel: 1-631-559-9269 1-516-512-3133

 Email: info@creative-biomart.com  Fax: 1-631-938-8127

 45-1 Ramsey Road, Shirley, NY 11967, USA

Purity	> 95% by SDS – PAGE.
Form	Liquid. In 20mM Tris-HCl buffer(pH 8.0) containing 10% glycerol 5mM DTT, 0.1M NaCl, and 1mM EDTA.
Concentration	0.5 mg/ml (determined by Bradford assay).
Storage	Can be stored at +4°C short term (1-2 weeks). For long term storage, aliquot and store at -20°C or -70°C. Avoid repeated freezing and thawing cycles.

GENE INFORMATION

Gene Name	GALE UDP-galactose-4-epimerase [Homo sapiens]
Synonyms	GALE; UDP-galactose-4-epimerase; SDR1E1; FLJ95174; FLJ97302; UDP-glucose 4-epimerase; galactowaldenase; OTTHUMP00000002994; OTTHUMP000000037931; UDP-galactose 4-epimerase; UDP galactose-4"-epimerase; galactose-4-epimerase, UDP-; short chain dehydrogenase/reductase family 1E, member 1; EC 5.1.3.2
Gene ID	2582
mRNA Refseq	NM_000403
Protein Refseq	NP_000394
MIM	606953
UniProt ID	Q14376
Chromosome Location	1p36-p35

 Tel: 1-631-559-9269 1-516-512-3133

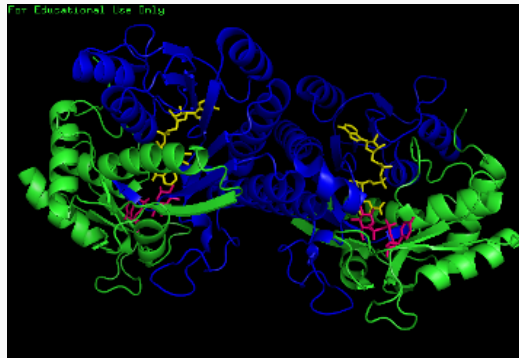
 Email: info@creative-biomart.com  Fax: 1-631-938-8127

 45-1 Ramsey Road, Shirley, NY 11967, USA

Pathway Amino sugar and nucleotide sugar metabolism; Galactose metabolism; Metabolic pathways

Function UDP-glucose 4-epimerase activity; binding; coenzyme binding; isomerase activity; protein homodimerization activity

Structure of UDP-glucose 4-epimerase.



 Tel: 1-631-559-9269 1-516-512-3133

 Email: info@creative-biomart.com  Fax: 1-631-938-8127

 45-1 Ramsey Road, Shirley, NY 11967, USA