

## Recombinant Human GALE protein

Cat. No. GALE-9778H Lot. No. (See product label)

### SPECIFICATION

<b>Product Overview</b>	Recombinant Human GALEprotein(Q14376)(348aa) was expressed in E. coli.
<b>Species</b>	Human
<b>Source</b>	E.coli
<b>ProteinLength</b>	348aa
<b>Tag</b>	Non
<b>Form</b>	20mM Tris.Cl, 50% Glycerol, pH8.0.
<b>Molecular Mass</b>	38.3kDa
<b>Storage</b>	Store at -80°C and avoid repeated freeze-thaw cycles.
<b>Reconstitution</b>	It is recommended that sterile water be added to the vial to prepare a stock solution of 0.2 ug/ul. Centrifuge the vial at 4°C before opening to recover the entire contents.

### GENE INFORMATION

<b>Gene Name</b>	GALE UDP-galactose-4-epimerase [ Homo sapiens ]
<b>Official Symbol</b>	GALE

 Tel: 1-631-559-9269 1-516-512-3133

 Email: [info@creative-biomart.com](mailto:info@creative-biomart.com)  Fax: 1-631-938-8127

 45-1 Ramsey Road, Shirley, NY 11967, USA

**Synonyms** GALE; UDP-galactose-4-epimerase; galactose 4 epimerase, UDP; UDP-glucose 4-epimerase; SDR1E1; short chain dehydrogenase/reductase family 1E; member 1; UDP glucose 4 epimerase; galactowaldenase; UDP-galactose 4-epimerase; UDP galactose-4-epimerase; galactose-4-epimerase, UDP-; short chain dehydrogenase/reductase family 1E, member 1; FLJ95174; FLJ97302;

**Gene ID** [2582](#)

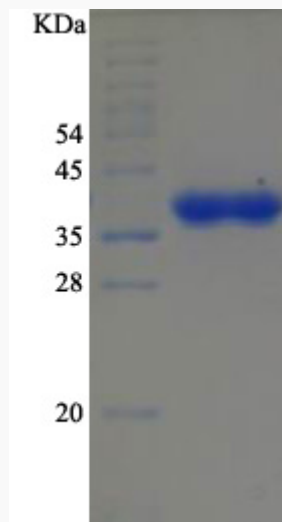
**mRNA Refseq** [NM\\_000403](#)

**Protein Refseq** [NP\\_000394](#)

**MIM** [606953](#)

**UniProt ID** [Q14376](#)

**SDS-PAGE**



 Tel: 1-631-559-9269 1-516-512-3133

 Email: [info@creative-biomart.com](mailto:info@creative-biomart.com)  Fax: 1-631-938-8127

 45-1 Ramsey Road, Shirley, NY 11967, USA