

Recombinant Human GALK1 Protein, GST-tagged

Cat. No. GALK1-4681H Lot. No. (See product label)

SPECIFICATION

| | |
|-------------------------|---|
| Product Overview | Human GALK1 full-length ORF (AAH01166, 1 a.a. - 392 a.a.) recombinant protein with GST-tag at N-terminal. |
| Species | Human |
| Source | Wheat Germ |
| Description | Galactokinase is a major enzyme for the metabolism of galactose and its deficiency causes congenital cataracts during infancy and presenile cataracts in the adult population. [provided by RefSeq] |
| Molecular Mass | 68.86 kDa |
| AA Sequence | MAALRQPQVAELLAEARRAFREFGAPELAVSAPGRVNLIGEHTDYNQGLVLPMA LELMTVLVVGSPRKDGLVSLTTSEGADEPQRLQFPLPTAQRSLEPGTTPRWANYVKG VIQYYPAAPLPGFSAVVVSSVPLGGGLSSSASLEVATYTFLLQQLCPDSGTIAARAQV CQQAEHFAGMPCGIMDQFISLMGQKGHALLIDCRSLETSLVPLSDPKLAVLITNSNV RHSLASSEYPVRRRQCEEVARALGKESLREVQLEELEAARDLVSKEGFRRARHVVG EIRRTAQAAAALRRGDYRAFGRMLVESHRSRDRDDYEVSCPELDQLVEAALAVPGVY GSRMTGGGFGGCTVTLLLEASAAPHAMRHIQEHYGGTATFYLSQAADGAKVLCL |
| Applications | Enzyme-linked Immunoabsorbent Assay Western Blot (Recombinant protein) Antibody Production Protein Array |

 Tel: 1-631-559-9269 1-516-512-3133

 Email: info@creative-biomart.com  Fax: 1-631-938-8127

 45-1 Ramsey Road, Shirley, NY 11967, USA

| | |
|-----------------------|--|
| Notes | Best use within three months from the date of receipt of this protein. |
| Storage | Store at -80 centigrade. Aliquot to avoid repeated freezing and thawing. |
| Storage Buffer | 50 mM Tris-HCl, 10 mM reduced Glutathione, pH=8.0 in the elution buffer. |

GENE INFORMATION

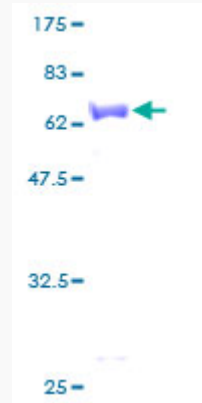
| | |
|------------------------|---|
| Gene Name | GALK1 galactokinase 1 [Homo sapiens] |
| Official Symbol | GALK1 |
| Synonyms | GALK1; galactokinase 1; GALK; galactokinase; galactose kinase; GK1; |
| Gene ID | 2584 |
| mRNA Refseq | NM_000154 |
| Protein Refseq | NP_000145 |
| MIM | 604313 |
| UniProt ID | P51570 |

 Tel: 1-631-559-9269 1-516-512-3133

 Email: info@creative-biomart.com  Fax: 1-631-938-8127

 45-1 Ramsey Road, Shirley, NY 11967, USA

**Quality Control
Testing**



12.5% SDS-PAGE Stained with Coomassie Blue.

 Tel: 1-631-559-9269 1-516-512-3133

 Email: info@creative-biomart.com  Fax: 1-631-938-8127

 45-1 Ramsey Road, Shirley, NY 11967, USA