

Recombinant Human GALK1 Protein, Myc/DDK-tagged, C13 and N15-labeled

Cat. No. GALK1-6423H Lot. No. (See product label)

SPECIFICATION

| | |
|-------------------------|--|
| Product Overview | GALK1 MS Standard C13 and N15-labeled recombinant protein (NP_000145) with a C-terminal MYC/DDK tag, was expressed in HEK293 cells. |
| Species | Human |
| Source | HEK293 |
| Description | Galactokinase is a major enzyme for the metabolism of galactose and its deficiency causes congenital cataracts during infancy and presenile cataracts in the adult population. |
| Molecular Mass | 42.3 kDa |
| AA Sequence | <p>MAALRQPQVAELLAEARRAFREFGAPELAVSAPGRVNLIGEHTDYNQGLVLPMA LELMTVLVGSPRKDGLVSLTTSEGADEPQRLQFPLPTAQRSLEPGTPRWANYVKG VIQYYPAAPLPGFSAVVVSSVPLGGGLSSSASLEVATYTFLLQQLCPDSGTIAARAQV CQQAEHFAGMPCGIMDQFISLMGQKGHALLIDCRSLETSLVPLSDPKLAVLITNSNV RHSLASSEYPVRRRQCEEVARALGKESLREVQLEELEAARDLVSKEGFRRARHVVG EIRRTAQAAAALRRGDYRAFGRMLVESHRSRDDYEVSCPELDQLVEAALAVPGVY GSRMTGGGFGGCTVTLLEASAAPHAMRHIQEHYGGTATFYLSQAADGAKVLCLTRT RPLEQKLISEEDLAANDILDYKDDDDKV</p> |
| Purity | > 80% as determined by SDS-PAGE and Coomassie blue staining |

 Tel: 1-631-559-9269 1-516-512-3133

 Email: info@creative-biomart.com  Fax: 1-631-938-8127

 45-1 Ramsey Road, Shirley, NY 11967, USA

| | |
|-----------------------|--|
| Stability | Stable for 3 months from receipt of products under proper storage and handling conditions. |
| Storage | Store at -80 centigrade. Avoid repeated freeze-thaw cycles. |
| Concentration | 50 µg/mL as determined by BCA |
| Storage Buffer | 100 mM glycine, 25 mM Tris-HCl, pH 7.3. |

GENE INFORMATION

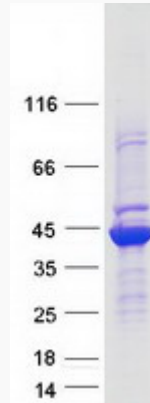
| | |
|------------------------|---|
| Gene Name | GALK1 galactokinase 1 [Homo sapiens (human)] |
| Official Symbol | GALK1 |
| Synonyms | GALK1; galactokinase 1; GALK; galactokinase; galactose kinase; GK1; |
| Gene ID | 2584 |
| mRNA Refseq | NM_000154 |
| Protein Refseq | NP_000145 |
| MIM | 604313 |
| UniProt ID | P51570 |

 Tel: 1-631-559-9269 1-516-512-3133

 Email: info@creative-biomart.com  Fax: 1-631-938-8127

 45-1 Ramsey Road, Shirley, NY 11967, USA

SDS-PAGE



 Tel: 1-631-559-9269 1-516-512-3133

 Email: info@creative-biomart.com  Fax: 1-631-938-8127

 45-1 Ramsey Road, Shirley, NY 11967, USA