

Recombinant Human GALM Protein (Ala2-Ala342), C-His tagged

Cat. No. GALM-3662H Lot. No. (See product label)

SPECIFICATION

Product Overview	Recombinant human GALM (Ala2-Ala342) protein fused with the C-terminal His tag was expressed in E. coli.
Species	Human
Source	E.coli
ProteinLength	Ala2-Ala342
Molecular Mass	37.51 kDa
Purity	>90 % as determined by SDS-PAGE.
Notes	For research use only.
Storage	Use a manual defrost freezer and avoid repeated freeze thaw cycles. Store at 2 to 8 centigrade for one week. Store at -20 to -80 centigrade for twelve months from the date of receipt.
Storage Buffer	Supplied as solution form in PBS or lyophilized from PBS.
Reconstitution	Reconstitute in sterile water for a stock solution.
Shipping	In general, proteins are provided as lyophilized powder/frozen liquid. They are

 Tel: 1-631-559-9269 1-516-512-3133

 Email: info@creative-biomart.com  Fax: 1-631-938-8127

 45-1 Ramsey Road, Shirley, NY 11967, USA

shipped out with dry ice/blue ice unless customers require otherwise.

GENE INFORMATION

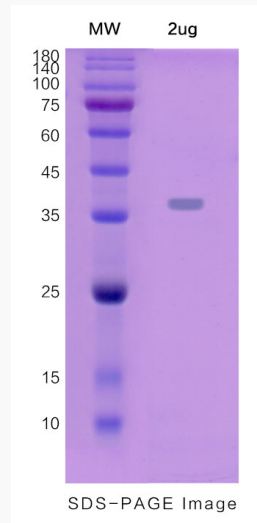
Gene Name	GALM galactose mutarotase (aldose 1-epimerase) [Homo sapiens (human)]
Official Symbol	GALM
Synonyms	GALM; galactose mutarotase (aldose 1-epimerase); aldose 1-epimerase; aldose 1 epimerase; galactomutarotase; IBD1; BLOCK25;
Gene ID	130589
mRNA Refseq	NM_138801
Protein Refseq	NP_620156
MIM	608883
UniProt ID	Q96C23

 Tel: 1-631-559-9269 1-516-512-3133

 Email: info@creative-biomart.com  Fax: 1-631-938-8127

 45-1 Ramsey Road, Shirley, NY 11967, USA

SDS-PAGE



 Tel: 1-631-559-9269 1-516-512-3133

 Email: info@creative-biomart.com  Fax: 1-631-938-8127

 45-1 Ramsey Road, Shirley, NY 11967, USA