

Recombinant Human GALM Protein, GST-tagged

Cat. No. GALM-4685H Lot. No. (See product label)

SPECIFICATION

Product Overview	Human GALM full-length ORF (NP_620156.1, 1 a.a. - 342 a.a.) recombinant protein with GST-tag at N-terminal.
Species	Human
Source	Wheat Germ
Description	This gene encodes an enzyme that catalyzes the epimerization of hexose sugars such as glucose and galactose. The encoded protein is expressed in the cytoplasm and has a preference for galactose. The encoded protein may be required for normal galactose metabolism by maintaining the equilibrium of alpha and beta anomers of galactose
Molecular Mass	64.2 kDa
AA Sequence	MASVTRAVFGELPSGGGTVEKFQLQSDLLRVDIISWGCTITALEVKDRQGRASDVVL GFAELEGYLQKQPYFGAVIGRVANRIAKGTFKVDGKEYHLAINKEPNSLHGGVRFDFD KVLWTPRVLSNGVQFSRISPDGEEGYPGELKVVVWVYTLDDGGELIVNYRAQASQATP VNLTNHSYFNLAGQASPNINDHEVTIEADTYLPVDETLIPTGEVAPVQGTAFDLRKPV ELGKHLQDFHNLNGFDHNFCLKGSKEKHFCARVHHAASGRVLEVYTTQPGVQFYTG NFLDGTCLKGKNGAVYPKHSGFCLETQNWPDVAVNQPRFPPVLLRPGEEYDHTTWFK FSVA
Applications	Enzyme-linked Immunoabsorbent Assay Western Blot (Recombinant protein)

 Tel: 1-631-559-9269 1-516-512-3133

 Email: info@creative-biomart.com  Fax: 1-631-938-8127

 45-1 Ramsey Road, Shirley, NY 11967, USA

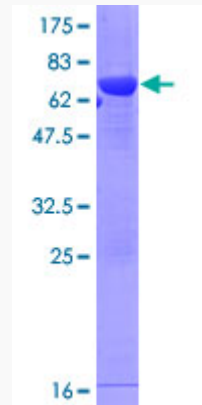
	Antibody Production Protein Array
Notes	Best use within three months from the date of receipt of this protein.
Storage	Store at -80 centigrade. Aliquot to avoid repeated freezing and thawing.
Storage Buffer	50 mM Tris-HCl, 10 mM reduced Glutathione, pH=8.0 in the elution buffer.
GENE INFORMATION	
Gene Name	GALM galactose mutarotase (aldose 1-epimerase) [Homo sapiens]
Official Symbol	GALM
Synonyms	GALM; galactose mutarotase (aldose 1-epimerase); aldose 1-epimerase; aldose 1 epimerase; galactomutarotase; IBD1; BLOCK25;
Gene ID	130589
mRNA Refseq	NM_138801
Protein Refseq	NP_620156
MIM	608883
UniProt ID	Q96C23

 Tel: 1-631-559-9269 1-516-512-3133

 Email: info@creative-biomart.com  Fax: 1-631-938-8127

 45-1 Ramsey Road, Shirley, NY 11967, USA

**Quality Control
Testing**



12.5% SDS-PAGE Stained with Coomassie Blue.

 Tel: 1-631-559-9269 1-516-512-3133

 Email: info@creative-biomart.com  Fax: 1-631-938-8127

 45-1 Ramsey Road, Shirley, NY 11967, USA