

## Recombinant Human GALP Protein, GST-tagged

Cat. No. GALP-4713H Lot. No. (See product label)

### SPECIFICATION

<b>Product Overview</b>	Human GALP full-length ORF ( AAI48723.1, 1 a.a. - 116 a.a.) recombinant protein with GST-tag at N-terminal.
<b>Species</b>	Human
<b>Source</b>	Wheat Germ
<b>Description</b>	This gene encodes a member of the galanin family of neuropeptides. The encoded protein binds galanin receptors 1, 2 and 3 with the highest affinity for galanin receptor 3 and has been implicated in biological processes involving the central nervous system including hypothalamic regulation of metabolism and reproduction. A peptide encoded by a splice variant of this gene, termed alarin, may have vasoactive properties and serve as a marker for neuroblastic tumors
<b>Molecular Mass</b>	39.71 kDa
<b>AA Sequence</b>	MAPPSVPLVLLLVLVLLSLAETPASAPAHRRGGWTLNSAGYLLGPVLHLPQMGDQD GKRETALEILDWLKAIIDGLPYSHPPQPSKRNVMETFAKPEIGDLGMLSMKIPKEEDVL KS
<b>Applications</b>	Enzyme-linked Immunoabsorbent Assay Western Blot (Recombinant protein) Antibody Production Protein Array

 Tel: 1-631-559-9269 1-516-512-3133

 Email: [info@creative-biomart.com](mailto:info@creative-biomart.com)  Fax: 1-631-938-8127

 45-1 Ramsey Road, Shirley, NY 11967, USA

<b>Notes</b>	Best use within three months from the date of receipt of this protein.
<b>Storage</b>	Store at -80 centigrade. Aliquot to avoid repeated freezing and thawing.
<b>Storage Buffer</b>	50 mM Tris-HCl, 10 mM reduced Glutathione, pH=8.0 in the elution buffer.

## GENE INFORMATION

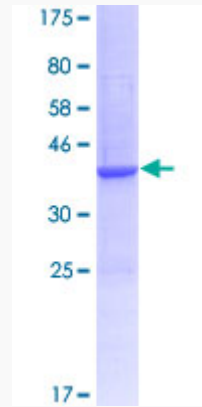
<b>Gene Name</b>	GALP galanin-like peptide [ Homo sapiens ]
<b>Official Symbol</b>	GALP
<b>Synonyms</b>	GALP; galanin-like peptide; alarin; gal-like peptide;
<b>Gene ID</b>	85569
<b>mRNA Refseq</b>	NM_001145546
<b>Protein Refseq</b>	NP_001139018
<b>MIM</b>	611178
<b>UniProt ID</b>	Q9UBC7

 Tel: 1-631-559-9269 1-516-512-3133

 Email: [info@creative-biomart.com](mailto:info@creative-biomart.com)  Fax: 1-631-938-8127

 45-1 Ramsey Road, Shirley, NY 11967, USA

**Quality Control  
Testing**



12.5% SDS-PAGE Stained with Coomassie Blue.

 Tel: 1-631-559-9269 1-516-512-3133

 Email: [info@creative-biomart.com](mailto:info@creative-biomart.com)  Fax: 1-631-938-8127

 45-1 Ramsey Road, Shirley, NY 11967, USA