

# Recombinant Human GALP Protein, Myc/DDK-tagged, C13 and N15-labeled

**Cat. No.** GALP-5790H    **Lot. No.** (See product label)

## SPECIFICATION

<b>Product Overview</b>	GALP MS Standard C13 and N15-labeled recombinant protein (NP_149097) with a C-terminal MYC/DDK tag, was expressed in HEK293 cells.
<b>Species</b>	Human
<b>Source</b>	HEK293
<b>Description</b>	This gene encodes a member of the galanin family of neuropeptides. The encoded protein binds galanin receptors 1, 2 and 3 with the highest affinity for galanin receptor 3 and has been implicated in biological processes involving the central nervous system including hypothalamic regulation of metabolism and reproduction. A peptide encoded by a splice variant of this gene, termed alarin, has vasoactive properties, displays antimicrobial activity against E. coli, and may serve as a marker for neuroblastic tumors.
<b>Molecular Mass</b>	12.4 kDa
<b>AA Sequence</b>	MAPPSVPLVLLLVLVLLSLAETPASAPAHRRGGWTLNSAGYLLGPVLHLPQMGDQD GKRETALEILDWLKAIIDGLPYSHPPQPSKRNVMETFAKPEIGDLGMLSMKIPKEEDVL KSTRTRPLEQKLISEEDLAANDILDYKDDDDKV
<b>Purity</b>	> 80% as determined by SDS-PAGE and Coomassie blue staining
<b>Stability</b>	Stable for 3 months from receipt of products under proper storage and handling

 Tel: 1-631-559-9269    1-516-512-3133

 Email: [info@creative-biomart.com](mailto:info@creative-biomart.com)     Fax: 1-631-938-8127

 45-1 Ramsey Road, Shirley, NY 11967, USA

conditions.

**Storage** Store at -80 centigrade. Avoid repeated freeze-thaw cycles.

**Concentration** 50 µg/mL as determined by BCA

**Storage Buffer** 100 mM glycine, 25 mM Tris-HCl, pH 7.3.

## GENE INFORMATION

**Gene Name** GALP galanin-like peptide [ Homo sapiens (human) ]

**Official Symbol** GALP

**Synonyms** GALP; galanin-like peptide; alarin; gal-like peptide;

**Gene ID** 85569

**mRNA Refseq** NM\_033106

**Protein Refseq** NP\_149097

**MIM** 611178

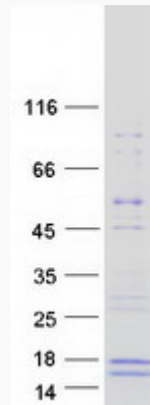
**UniProt ID** Q9UBC7

 Tel: 1-631-559-9269 1-516-512-3133

 Email: [info@creative-biomart.com](mailto:info@creative-biomart.com)  Fax: 1-631-938-8127

 45-1 Ramsey Road, Shirley, NY 11967, USA

**SDS-PAGE**



 Tel: 1-631-559-9269 1-516-512-3133

 Email: [info@creative-biomart.com](mailto:info@creative-biomart.com)  Fax: 1-631-938-8127

 45-1 Ramsey Road, Shirley, NY 11967, USA