

Recombinant Human GAMT Protein (Met1-Gly236), C-His tagged

Cat. No. GAMT-2328H Lot. No. (See product label)

SPECIFICATION

Product Overview	Recombinant human GAMT (Met1-Gly236) protein fused with the C-terminal His tag was expressed in E. coli.
Species	Human
Source	E.coli
ProteinLength	Met1-Gly236
Molecular Mass	25.96 kDa
Purity	>90 % as determined by SDS-PAGE.
Notes	For research use only.
Storage	Use a manual defrost freezer and avoid repeated freeze thaw cycles. Store at 2 to 8 centigrade for one week. Store at -20 to -80 centigrade for twelve months from the date of receipt.
Storage Buffer	Supplied as solution form in PBS or lyophilized from PBS.
Reconstitution	Reconstitute in sterile water for a stock solution.
Shipping	In general, proteins are provided as lyophilized powder/frozen liquid. They are

 Tel: 1-631-559-9269 1-516-512-3133

 Email: info@creative-biomart.com  Fax: 1-631-938-8127

 45-1 Ramsey Road, Shirley, NY 11967, USA

shipped out with dry ice/blue ice unless customers require otherwise.

GENE INFORMATION

Gene Name [GAMT guanidinoacetate N-methyltransferase \[Homo sapiens \(human\) \]](#)

Official Symbol [GAMT](#)

Synonyms [GAMT](#); [guanidinoacetate N-methyltransferase](#); [PIG2](#); [TP53I2](#);

Gene ID [2593](#)

mRNA Refseq [NM_000156](#)

Protein Refseq [NP_000147](#)

MIM [601240](#)

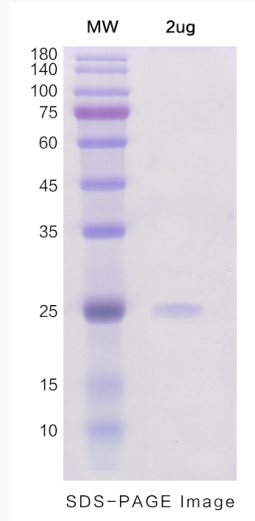
UniProt ID [Q14353](#)

 Tel: 1-631-559-9269 1-516-512-3133

 Email: info@creative-biomart.com  Fax: 1-631-938-8127

 45-1 Ramsey Road, Shirley, NY 11967, USA

SDS-PAGE



 Tel: 1-631-559-9269 1-516-512-3133

 Email: info@creative-biomart.com  Fax: 1-631-938-8127

 45-1 Ramsey Road, Shirley, NY 11967, USA