

Recombinant Human GAMT Protein, Myc/DDK-tagged, C13 and N15-labeled

Cat. No. GAMT-3154H **Lot. No.** (See product label)

SPECIFICATION

Product Overview	GAMT MS Standard C13 and N15-labeled recombinant protein (NP_000147) with a C-terminal MYC/DDK tag, was expressed in HEK293 cells.
Species	Human
Source	HEK293
Description	The protein encoded by this gene is a methyltransferase that converts guanidoacetate to creatine, using S-adenosylmethionine as the methyl donor. Defects in this gene have been implicated in neurologic syndromes and muscular hypotonia, probably due to creatine deficiency and accumulation of guanidinoacetate in the brain of affected individuals. Two transcript variants encoding different isoforms have been described for this gene. Pseudogenes of this gene are found on chromosomes 2 and 13.
Molecular Mass	26.3 kDa
AA Sequence	MSAPSATPIFAPGENCSPA WGAAPAA YDAADTHLRILGKPVMERWETPYMHALAAA ASSKGGRVLEVGFGMAIAASKVQEAPIDEHWIIECNDGVFQRLRDWAPRQTHKVIPL KGLWEDVAPTLPDGHFDGILYD TYPLSEETWHTHQFNFIKNHAFRLLLKPGGVLT YCN LTSWGELMKS KYSDITIMFEETQVPALLEAGFRRENIRTEVMALVPPADCRY YAFPQ MITPLVTKGTRTRPLEQKLISEEDLAANDILDYKDDDDKV
Purity	> 80% as determined by SDS-PAGE and Coomassie blue staining

 Tel: 1-631-559-9269 1-516-512-3133

 Email: info@creative-biomart.com  Fax: 1-631-938-8127

 45-1 Ramsey Road, Shirley, NY 11967, USA

Stability	Stable for 3 months from receipt of products under proper storage and handling conditions.
Storage	Store at -80 centigrade. Avoid repeated freeze-thaw cycles.
Concentration	50 µg/mL as determined by BCA
Storage Buffer	100 mM glycine, 25 mM Tris-HCl, pH 7.3.

GENE INFORMATION

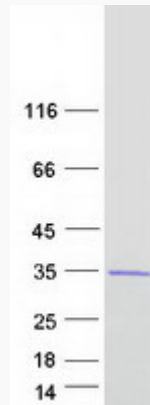
Gene Name	GAMT guanidinoacetate N-methyltransferase [Homo sapiens (human)]
Official Symbol	GAMT
Synonyms	GAMT; guanidinoacetate N-methyltransferase; PIG2; TP53I2;
Gene ID	2593
mRNA Refseq	NM_000156
Protein Refseq	NP_000147
MIM	601240
UniProt ID	Q14353

 Tel: 1-631-559-9269 1-516-512-3133

 Email: info@creative-biomart.com  Fax: 1-631-938-8127

 45-1 Ramsey Road, Shirley, NY 11967, USA

SDS-PAGE



 Tel: 1-631-559-9269 1-516-512-3133

 Email: info@creative-biomart.com  Fax: 1-631-938-8127

 45-1 Ramsey Road, Shirley, NY 11967, USA