

## Recombinant Human GAN Protein, GST-tagged

Cat. No. GAN-4717H Lot. No. (See product label)

### SPECIFICATION

<b>Product Overview</b>	Human GAN full-length ORF ( NP_071324.1, 1 a.a. - 597 a.a.) recombinant protein with GST-tag at N-terminal.
<b>Species</b>	Human
<b>Source</b>	Wheat Germ
<b>Description</b>	This gene encodes a member of the cytoskeletal BTB/kelch (Broad-Complex, Tramtrack and Bric a brac) repeat family. The encoded protein plays a role in neurofilament architecture and is involved in mediating the ubiquitination and degradation of some proteins. Defects in this gene are a cause of giant axonal neuropathy (GAN). [provided by RefSeq]
<b>Molecular Mass</b>	94 kDa
<b>AA Sequence</b>	<p>MAEGSAVSDPQHAARLLRALSSFREESRFCD AHLVLDGEEIPVQKNILAAASPYIRTK  LNYNPPKDDGSTYKIELEGISVMVMREILDYIFSGQIRLNEDTIQDVVQAADLLLLLTDL  KTLCCFLEGCIAAENCIGIRDFALHYCLHHVHYLATEYLETHFRDVSSTEEFLELSPQ  KLKEVISLEKLVGNERYVFEAVIRWIAHDTEIRKVMKDVMSALWVSGLDSSYLRE  QMLNEPLVREIVKECSNIPLSQPQQGEAMLANFKPRGYSECIVTVGGEERVSRKPTA  AMRCMPLYDPNRQLWIELAPLSMPRINHGVLSAEGFLFVFGGQDENKQTLSSGEK  YDPDANTWTALPPMNEARHNFGIVEIDGMLYILGGEDGEKELISMECYDIYSKTWTK  QPDLTMRKIGCYAAMKKKIYAMGGGSYGKLFESVECYDPRTQQWTAICPLKERRF  GAVACGVAMELYVFGGVRSREDAQGSEMVTCKSEFYHDEFKRWIYLNQNL CIPA</p>

 Tel: 1-631-559-9269 1-516-512-3133

 Email: [info@creative-biomart.com](mailto:info@creative-biomart.com)  Fax: 1-631-938-8127

 45-1 Ramsey Road, Shirley, NY 11967, USA

SSSFVYGAVPIGASIYVIGDLDTGTNYDYVREFKRSTGTWHHTKPLLPSDLRRTGCA  
ALRIANCKLFRLQLQQGLFRIRVHSP

<b>Applications</b>	Enzyme-linked Immunoabsorbent Assay Western Blot (Recombinant protein) Antibody Production Protein Array
<b>Notes</b>	Best use within three months from the date of receipt of this protein.
<b>Storage</b>	Store at -80 centigrade. Aliquot to avoid repeated freezing and thawing.
<b>Storage Buffer</b>	50 mM Tris-HCl, 10 mM reduced Glutathione, pH=8.0 in the elution buffer.

## GENE INFORMATION

<b>Gene Name</b>	GAN gigaxonin [ Homo sapiens ]
<b>Official Symbol</b>	GAN
<b>Synonyms</b>	GAN; gigaxonin; giant axonal neuropathy (gigaxonin); GAN1; KLHL16; kelch-like protein 16; FLJ38059;
<b>Gene ID</b>	8139
<b>mRNA Refseq</b>	NM_022041
<b>Protein Refseq</b>	NP_071324
<b>MIM</b>	605379

 Tel: 1-631-559-9269 1-516-512-3133

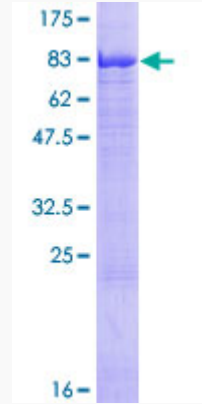
 Email: [info@creative-biomart.com](mailto:info@creative-biomart.com)  Fax: 1-631-938-8127

 45-1 Ramsey Road, Shirley, NY 11967, USA

UniProt ID

Q9H2C0

Quality Control  
Testing



12.5% SDS-PAGE Stained with Coomassie Blue.

 Tel: 1-631-559-9269 1-516-512-3133

 Email: [info@creative-biomart.com](mailto:info@creative-biomart.com)  Fax: 1-631-938-8127

 45-1 Ramsey Road, Shirley, NY 11967, USA