

Recombinant Human GAPDH Protein, His-tagged

Cat. No. GAPDH-045H Lot. No. (See product label)

SPECIFICATION

Product Overview	Recombinant Human GAPDH Protein with His tag was expressed in E. coli.
Species	Human
Source	E.coli
Description	Glyceraldehyde-3-phosphate dehydrogenase (GAPDH) catalyzes the phosphorylation of glyceraldehyde-3-phosphate during glycolysis. Though differentially expressed from tissue to tissue, GAPDH is thought to be a constitutively expressed housekeeping protein. For this reason, GAPDH mRNA and protein levels are often measured as controls in experiments quantifying specific changes in expression of other targets. Recent work has elucidated roles for GAPDH in apoptosis, gene expression, and nuclear transport. GAPDH may also play a role in neurodegenerative pathologies such as Huntington and Alzheimer's diseases.
Molecular Mass	~36 kDa
AA Sequence	MGKVKVGVNGFGRIGRLVTRAAFNSGKVDIVAINDPFIDLNYMVYMFQYDSTHGKFKH GTVKAENGLVINGNPITIFQERDPSKIKWGDAGAEYVVESTGVFTTMEKAGAHLQG GAKRVIISAPSADAPMFVMGVNHEKYDNSLKIISNASCTTNCLAPLAKVIHDNFGIVEG LMTTVHAITATQKTVDGSPGKLRDGRGALQNIIPASTGAAKAVGKVIPELNGKLTG MAFRVPTANVSVVDLTCRLEKPAKYDDIKKVVKQASEGPLKGILGYTEHQVSSDFN SDTHSSTFDAGAGIALNDHFVKLISWYDNEFGYSNRVVDLMAHMASKE
Purity	Transferred into competent cells and the supernatant was purified by NI column

 Tel: 1-631-559-9269 1-516-512-3133

 Email: info@creative-biomart.com  Fax: 1-631-938-8127

 45-1 Ramsey Road, Shirley, NY 11967, USA

affinity chromatography and the purity is > 85% (by SDS-PAGE).

Notes

For research use only, not for use in diagnostic procedure.

Storage

Store at 4 centigrade short term. Aliquot and store at -20 centigrade long term. Avoid freeze-thaw cycles.

Storage Buffer

PBS, pH7.4

GENE INFORMATION

Gene Name

GAPDH glyceraldehyde-3-phosphate dehydrogenase [Homo sapiens (human)]

Official Symbol

GAPDH

Synonyms

GAPDH; glyceraldehyde-3-phosphate dehydrogenase; GAPD; aging-associated gene 9 protein; peptidyl-cysteine S-nitrosylase GAPDH; G3PD; MGC88685;

Gene ID

2597

mRNA Refseq

NM_001256799

Protein Refseq

NP_001243728

MIM

138400

UniProt ID

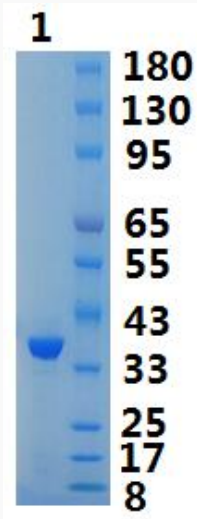
P04406

 Tel: 1-631-559-9269 1-516-512-3133

 Email: info@creative-biomart.com  Fax: 1-631-938-8127

 45-1 Ramsey Road, Shirley, NY 11967, USA

SDS-PAGE



 Tel: 1-631-559-9269 1-516-512-3133

 Email: info@creative-biomart.com  Fax: 1-631-938-8127

 45-1 Ramsey Road, Shirley, NY 11967, USA