

Recombinant Full Length Human GAPDH Protein, C-Flag-tagged

Cat. No. GAPDH-15HFL Lot. No. (See product label)

SPECIFICATION

Product Overview

Recombinant Full Length Human GAPDH Protein, fused to Flag-tag at C-terminus, was expressed in Mammalian cells.

Species

Human

Source

Mammalian Cells

Description

This gene encodes a member of the glyceraldehyde-3-phosphate dehydrogenase protein family. The encoded protein has been identified as a moonlighting protein based on its ability to perform mechanistically distinct functions. The product of this gene catalyzes an important energy-yielding step in carbohydrate metabolism, the reversible oxidative phosphorylation of glyceraldehyde-3-phosphate in the presence of inorganic phosphate and nicotinamide adenine dinucleotide (NAD). The encoded protein has additionally been identified to have uracil DNA glycosylase activity in the nucleus. Also, this protein contains a peptide that has antimicrobial activity against *E. coli*, *P. aeruginosa*, and *C. albicans*. Studies of a similar protein in mouse have assigned a variety of additional functions including nitrosylation of nuclear proteins, the regulation of mRNA stability, and acting as a transferrin receptor on the cell surface of macrophage. Many pseudogenes similar to this locus are present in the human genome. Alternative splicing results in multiple transcript variants.

Form

25 mM Tris HCl, pH 7.3, 100 mM glycine, 10% glycerol.

 Tel: 1-631-559-9269 1-516-512-3133

 Email: info@creative-biomart.com  Fax: 1-631-938-8127

 45-1 Ramsey Road, Shirley, NY 11967, USA

Molecular Mass	35.9 kDa
AA Sequence	MGKVKVGVNGFGRIGRLVTRAAFNSGKVDIVAINDPFIDLNYMVYMFQYDSTHGKFB GTVKAENGLVIN GNPITIFQERDPSKIKWGDAGAEYVVESTGVFTTMEKAGAHLQ GGAKRVIISAPSADAPMFVMGVNHEKY DNSLKIISNASCTTNCLAPLAKVIHDNFGIV EGLMTTVHAITATQKTVDGSPGKLWRDGRGALQNIIPAS TGAAKAVGKVIPELNGKL TGMAFRVPTANVSVVDLTCRLEKPAKYDDIKKVVQASEGPKLGILGYTEHQ VVSSDFNSDTHSSTFDAGAGIALNDHFVKLISWYDNEFGYSNRVVDLMAHMASKET RTRPLEQKLISEEDLAANDILDYKDDDDKV
Purity	> 80% as determined by SDS-PAGE and Coomassie blue staining.
Stability	Stable for 12 months from the date of receipt of the product under proper storage and handling conditions. Avoid repeated freeze-thaw cycles.
Storage	Store at -80 centigrade.
Concentration	>50 ug/mL as determined by microplate BCA method.
Preparation	Recombinant protein was captured through anti-DDK affinity column followed by conventional chromatography steps.
Protein Families	ES Cell Differentiation/IPS
Protein Pathways	Alzheimer's disease, Glycolysis / Gluconeogenesis, Metabolic pathways
Full Length	Full L.

GENE INFORMATION

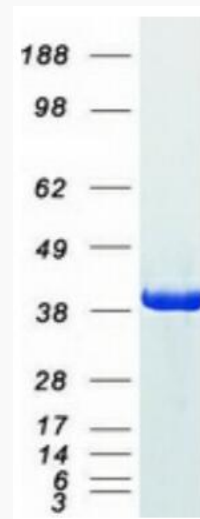
Gene Name [GAPDH glyceraldehyde-3-phosphate dehydrogenase \[Homo sapiens \(human\) \]](#)

 Tel: 1-631-559-9269 1-516-512-3133

 Email: info@creative-biomart.com  Fax: 1-631-938-8127

 45-1 Ramsey Road, Shirley, NY 11967, USA

Official Symbol	GAPDH
Synonyms	G3PD; GAPD; HEL-S-162eP
Gene ID	2597
mRNA Refseq	NM_002046.7
Protein Refseq	NP_002037.2
MIM	138400
UniProt ID	P04406



Coomassie blue staining of purified GAPDH protein.

 Tel: 1-631-559-9269 1-516-512-3133

 Email: info@creative-biomart.com  Fax: 1-631-938-8127

 45-1 Ramsey Road, Shirley, NY 11967, USA