

## Recombinant Human GAPDH protein, His-tagged

Cat. No. GAPDH-2519H Lot. No. (See product label)

### SPECIFICATION

<b>Product Overview</b>	Recombinant Human GAPDH (Gly2-Glu335) protein was fused to His-tag at N-terminus and expressed in E.coli.
<b>Species</b>	Human
<b>Source</b>	E.coli
<b>ProteinLength</b>	Gly2-Glu335
<b>Description</b>	<p>Glyceraldehyde-3-phosphate dehydrogenase (GAPDH) is also known as Peptidyl-cysteine S-nitrosylase GAPDH, which is an enzyme that catalyzes the sixth step of glycolysis and thus serves to break down glucose for energy and carbon molecules. GAPDH has both glyceraldehyde-3-phosphate dehydrogenase and nitrosylase activities, thereby playing a role in glycolysis and nuclear functions, respectively. GAPDH can participate in nuclear events including transcription, RNA transport, DNA replication and apoptosis. Also, GAPDH can modulate the organization and assembly of the cytoskeleton. Furthermore, GAPDH is a component of the GAIT (gamma interferon-activated inhibitor of translation) complex which mediates interferon-gamma-induced transcript-selective translation inhibition in inflammation processes.</p>
<b>Predicted N Terminal</b>	Gly2
<b>Form</b>	Lyophilized from 0.22 µm filtered solution in 50 mM Tris, 150 mM NaCl, pH7.5, 10% trehalose.

 Tel: 1-631-559-9269 1-516-512-3133

 Email: [info@creative-biomart.com](mailto:info@creative-biomart.com)  Fax: 1-631-938-8127

 45-1 Ramsey Road, Shirley, NY 11967, USA

<b>Molecular Mass</b>	The protein has a calculated MW of 36.9 kDa. The protein migrates as 37 kDa under reducing (R) condition (SDS-PAGE).
<b>Endotoxin</b>	Less than 1.0 EU per µg by the LAL method.
<b>Purity</b>	>95% as determined by SDS-PAGE.
<b>Storage</b>	<p>For long term storage, the product should be stored at lyophilized state at -20 centigrade or lower.</p> <p>Please avoid repeated freeze-thaw cycles.</p> <p>This product is stable after storage at:</p> <p>-20 to -70 centigrade for 12 months in lyophilized state;</p> <p>-70 centigrade for 3 months under sterile conditions after reconstitution.</p>
<b>Reconstitution</b>	It is recommended that sterile water be added to the vial to prepare a stock solution of 0.2 ug/ul. Centrifuge the vial at 4°C before opening to recover the entire contents.

## GENE INFORMATION

<b>Gene Name</b>	<a href="#">GAPDH</a>
<b>Official Symbol</b>	<a href="#">GAPDH</a>
<b>Synonyms</b>	GAPDH; glyceraldehyde-3-phosphate dehydrogenase; GAPD; aging-associated gene 9 protein; peptidyl-cysteine S-nitrosylase GAPDH; G3PD; MGC88685
<b>Gene ID</b>	<a href="#">2597</a>
<b>mRNA Refseq</b>	<a href="#">NM_001256799</a>
<b>Protein Refseq</b>	<a href="#">NP_001243728</a>

 Tel: 1-631-559-9269 1-516-512-3133

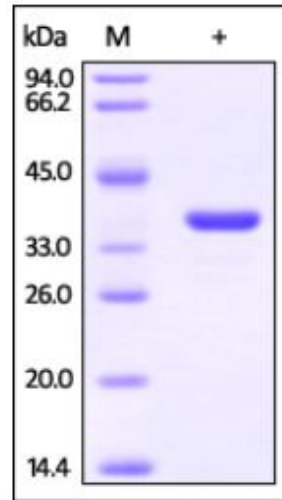
 Email: [info@creative-biomart.com](mailto:info@creative-biomart.com)  Fax: 1-631-938-8127

 45-1 Ramsey Road, Shirley, NY 11967, USA

MIM 138400

UniProt ID P04406

**SDS-PAGE of  
GAPDH-2519H**



Human GAPDH, His Tag on SDS-PAGE under reducing (R) condition. The gel was stained overnight with Coomassie Blue. The purity of the protein is greater than 95%.

Tel: 1-631-559-9269 1-516-512-3133

Email: [info@creative-biomart.com](mailto:info@creative-biomart.com) Fax: 1-631-938-8127

45-1 Ramsey Road, Shirley, NY 11967, USA