

Recombinant Human GAPDH Protein (Met1-Glu335), C-His tagged

Cat. No. GAPDH-2961H **Lot. No.** (See product label)

SPECIFICATION

Product Overview	Recombinant human GAPDH (Met1-Glu335) protein fused with the C-terminal His tag was expressed in E. coli.
Species	Human
Source	E.coli
ProteinLength	Met1-Glu335
Molecular Mass	36.06 kDa
Purity	>90 % as determined by SDS-PAGE.
Notes	For research use only.
Storage	Use a manual defrost freezer and avoid repeated freeze thaw cycles. Store at 2 to 8 centigrade for one week. Store at -20 to -80 centigrade for twelve months from the date of receipt.
Storage Buffer	Supplied as solution form in PBS, pH 7.5 or lyophilized from PBS, pH 7.5.
Reconstitution	Reconstitute in sterile water for a stock solution.
Shipping	In general, proteins are provided as lyophilized powder. They are shipped out with

 Tel: 1-631-559-9269 1-516-512-3133

 Email: info@creative-biomart.com  Fax: 1-631-938-8127

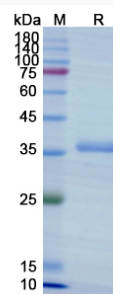
 45-1 Ramsey Road, Shirley, NY 11967, USA

blue ice unless customers require otherwise.

GENE INFORMATION

Gene Name	GAPDH glyceraldehyde-3-phosphate dehydrogenase [Homo sapiens (human)]
Official Symbol	GAPDH
Synonyms	GAPDH; glyceraldehyde-3-phosphate dehydrogenase; GAPD; aging-associated gene 9 protein; peptidyl-cysteine S-nitrosylase GAPDH; G3PD; MGC88685;
Gene ID	2597
mRNA Refseq	NM_001256799
Protein Refseq	NP_001243728
MIM	138400
UniProt ID	P04406

SDS-PAGE



 Tel: 1-631-559-9269 1-516-512-3133

 Email: info@creative-biomart.com  Fax: 1-631-938-8127

 45-1 Ramsey Road, Shirley, NY 11967, USA