

Recombinant Chicken GAPDH Protein (2-333 aa), His-tagged

Cat. No. GAPDH-517C Lot. No. (See product label)

SPECIFICATION

Product Overview	Recombinant Chicken GAPDH Protein (2-333 aa) is produced by E. coli expression system. This protein is fused with a 6xHis tag at the N-terminal. Protein Description: Full Length of Mature Protein.
Species	Chicken
Source	E.coli
ProteinLength	2-333 aa
Description	<p>Has both glyceraldehyde-3-phosphate dehydrogenase and nitrosylase activities, thereby playing a role in glycolysis and nuclear functions, respectively.</p> <p>Glyceraldehyde-3-phosphate dehydrogenase is a key enzyme in glycolysis that catalyzes the first step of the pathway by converting D-glyceraldehyde 3-phosphate (G3P) into 3-phospho-D-glyceroyl phosphate. Modulates the organization and assembly of the cytoskeleton. Also participates in nuclear events including transcription, RNA transport, DNA replication and apoptosis. Nuclear functions are probably due to the nitrosylase activity that mediates cysteine S-nitrosylation of nuclear target proteins.</p>
Form	Tris-based buffer, 50% glycerol
Molecular Mass	39.6 kDa
AA Sequence	VKVGVNGFGRIGRLVTRAAVLSGKVQVVAINDPFIDLNYMVYMFKYDSTHGHFKGTV KAENGLVINGHAITIFQERDPSNIKWADAGAEYVVESTGVFTTMEKAGAHKGGAK

 Tel: 1-631-559-9269 1-516-512-3133

 Email: info@creative-biomart.com  Fax: 1-631-938-8127

 45-1 Ramsey Road, Shirley, NY 11967, USA

RVIIAPSADAPMFVMGVNHEKYDKSLKIVSNASCTTNCLAPLAKVIHDNFGIVEGLM
 TTVHAITATQKTVDGPGSKLWRDGRGAAQNIIPASTGAAKAVGKVIPELNGKLTGMA
 FRVPTPNVSVVDLTCRLEKPAKYDDIKRVVAAAADGPLKGILGYTEDQVVSCDFNGD
 SHSSTFDAGAGIALNDHFVKLVSWYDNEFGYSNRVVDLMVHMASKE

Purity > 90% as determined by SDS-PAGE.

Notes Repeated freezing and thawing is not recommended. Store working aliquots at 4 centigrade for up to one week.

Storage The shelf life is related to many factors, storage state, buffer ingredients, storage temperature and the stability of the protein itself. Generally, the shelf life of liquid form is 6 months at -20 centigrade/-80 centigrade. The shelf life of lyophilized form is 12 months at -20 centigrade/-80 centigrade.

Concentration A hardcopy of COA with concentration instruction is sent along with the products.

GENE INFORMATION

Gene Name [GAPDH glyceraldehyde-3-phosphate dehydrogenase \[Gallus gallus \(chicken\) \]](#)

Official Symbol [GAPDH](#)

Synonyms KNC-NDS6;

Gene ID [374193](#)

mRNA Refseq [NM_204305](#)

Protein Refseq [NP_989636](#)

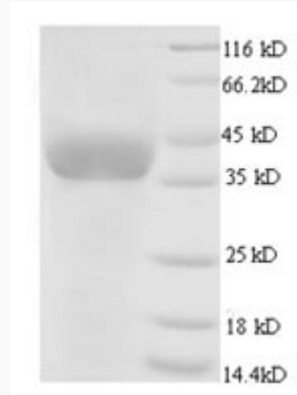
 Tel: 1-631-559-9269 1-516-512-3133

 Email: info@creative-biomart.com  Fax: 1-631-938-8127

 45-1 Ramsey Road, Shirley, NY 11967, USA

UniProt ID

P00356



(Tris-Glycine gel) Discontinuous SDS-PAGE (reduced) with 5% enrichment gel and 15% separation gel.

 Tel: 1-631-559-9269 1-516-512-3133

 Email: info@creative-biomart.com  Fax: 1-631-938-8127

 45-1 Ramsey Road, Shirley, NY 11967, USA