

Recombinant Human GAPDHS Protein (69-408 aa), His-tagged

Cat. No. GAPDHS-2796H Lot. No. (See product label)

SPECIFICATION

Product Overview Recombinant Human GAPDHS Protein (69-408 aa) is produced by Baculovirus expression system. This protein is fused with a 6xHis tag at the N-terminal. Research Area: Signal Transduction. Protein Description: Partial.

Species Human

Source Insect Cells

ProteinLength 69-408 aa

Description May play an important role in regulating the switch between different pathways for energy production during spermiogenesis and in the spermatozoon. Required for sperm motility and male fertility (By similarity).

Form Tris-based buffer,50% glycerol

Molecular Mass 39.1 kDa

AA Sequence

```
MVSVARELTVGINGFGRIGRLVLRACMEKGVKVVAVNDPFIDPEYMVYMFKYDSTH
GRYKGSVEFRNGQLVVDNHEISVYQCCKEPKQIPWRAVGSPLYVVESTGVYLSIQAAS
DHISAGAQRVVISAPSPDAPMFVMGVNENDYNPGSMNIVSNASCTTNCLAPLAKVIH
ERFGIVEGLMTTVHSYTATQKTVDGSPRKAWRDGRGAHQNIIPASTGAAKAVTKVIP
ELKGKLTGMAFRVPTPDVSVVDLTCRLAQAPYSAIKEAVKAAAKGPMAGILAYTED
EVVSTDFLGDTHSSIFDAKAGIALNDNFVKLISWYDNEYGYSHRVVDLLRYMFSRDK
```

 Tel: 1-631-559-9269 1-516-512-3133

 Email: info@creative-biomart.com  Fax: 1-631-938-8127

 45-1 Ramsey Road, Shirley, NY 11967, USA

Purity	> 85% as determined by SDS-PAGE.
Notes	Repeated freezing and thawing is not recommended. Store working aliquots at 4 centigrade for up to one week.
Storage	The shelf life is related to many factors, storage state, buffer ingredients, storage temperature and the stability of the protein itself. Generally, the shelf life of liquid form is 6 months at -20 centigrade/-80 centigrade. The shelf life of lyophilized form is 12 months at -20 centigrade/-80 centigrade.
Concentration	A hardcopy of COA will be sent along with the products. Please refer to it for detailed information.

GENE INFORMATION

Gene Name	GAPDHS glyceraldehyde-3-phosphate dehydrogenase, spermatogenic [Homo sapiens]
Official Symbol	GAPDHS
Synonyms	GAPDHS; GAPDS; GAPD2; GAPDH 2; spermatogenic glyceraldehyde-3-phosphate dehydrogenase; HSD-35; GAPDH-2;
Gene ID	26330
mRNA Refseq	NM_014364
Protein Refseq	NP_055179
MIM	609169







 Tel: 1-631-559-9269 1-516-512-3133

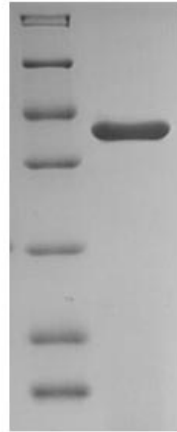
 Email: info@creative-biomart.com  Fax: 1-631-938-8127

 45-1 Ramsey Road, Shirley, NY 11967, USA

UniProt ID

O14556

kDa	M
116.0	
66.2	
45.0	
35.0	
25.0	
18.4	
14.4	



(Tris-Glycine gel) Discontinuous SDS-PAGE (reduced) with 5% enrichment gel and 15% separation gel.

 Tel: 1-631-559-9269 1-516-512-3133

 Email: info@creative-biomart.com  Fax: 1-631-938-8127

 45-1 Ramsey Road, Shirley, NY 11967, USA