

Recombinant Human GAPDHS Protein, GST-tagged

Cat. No. GAPDHS-4726H Lot. No. (See product label)

SPECIFICATION

Product Overview	Human GAPDS full-length ORF (AAH36373, 1 a.a. - 408 a.a.) recombinant protein with GST-tag at N-terminal.
Species	Human
Source	Wheat Germ
Description	This gene encodes a protein belonging to the glyceraldehyde-3-phosphate dehydrogenase family of enzymes that play an important role in carbohydrate metabolism. Like its somatic cell counterpart, this sperm-specific enzyme functions in a nicotinamide adenine dinucleotide-dependent manner to remove hydrogen and add phosphate to glyceraldehyde 3-phosphate to form 1,3-diphosphoglycerate. During spermiogenesis, this enzyme may play an important role in regulating the switch between different energy-producing pathways, and it is required for sperm motility and male fertility. [provided by RefSeq]
Molecular Mass	70.62 kDa
AA Sequence	MSKRDIVLTNVTVVQLLRQPCPVTRAPPPPEPKAEVQPQPEPTPVREEIKPPPPP LPPHPATPPPKMVSVARELTVGINGFGRIGRLVLRACMEKGVKVVAVNDPFIDPEYM VYMFKYDSTHGRYKGSVEFRNGQLVVDNHEISVYQCCKEPKQIPWRAVGSPLYVVEST GVYLSIQAASDHISAGAQRVVISAPSPDAPMFVMGVNENDYNPGSMNIVSNASCTTN CLAPLAKVIHERFGIVEGLMTTVHSYATQKTVDGSPSRKAWRDGRGAHQNIIPASTG AAKAVTKVIPELKGKLTGMAFRVPTPDVSVVDLTCRLAQPAPYSAIKEAVKAAAKGP

 Tel: 1-631-559-9269 1-516-512-3133

 Email: info@creative-biomart.com  Fax: 1-631-938-8127

 45-1 Ramsey Road, Shirley, NY 11967, USA

MAGILAYTEDEVVSTDFLGDTHSSIFDAKAGIALNDNFVKLISWYDNEYGYSHRVVDL
LRYMFSRDK

Applications	Enzyme-linked Immunoabsorbent Assay Western Blot (Recombinant protein) Antibody Production Protein Array
Notes	Best use within three months from the date of receipt of this protein.
Storage	Store at -80 centigrade. Aliquot to avoid repeated freezing and thawing.
Storage Buffer	50 mM Tris-HCl, 10 mM reduced Glutathione, pH=8.0 in the elution buffer.

GENE INFORMATION

Gene Name	GAPDHS glyceraldehyde-3-phosphate dehydrogenase, spermatogenic [Homo sapiens]
Official Symbol	GAPDHS
Synonyms	GAPDHS; glyceraldehyde-3-phosphate dehydrogenase, spermatogenic; GAPDS; glyceraldehyde-3-phosphate dehydrogenase, testis-specific; GAPD2; GAPDH 2; spermatogenic glyceraldehyde-3-phosphate dehydrogenase; spermatogenic cell-specific glyceraldehyde 3-phosphate dehydrogenase 2; HSD-35; GAPDH-2;
Gene ID	26330
mRNA Refseq	NM_014364
Protein Refseq	NP_055179

 Tel: 1-631-559-9269 1-516-512-3133

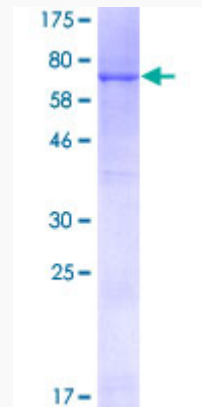
 Email: info@creative-biomart.com  Fax: 1-631-938-8127

 45-1 Ramsey Road, Shirley, NY 11967, USA

MIM 609169

UniProt ID O14556

Quality Control
Testing



12.5% SDS-PAGE Stained with Coomassie Blue.

Tel: 1-631-559-9269 1-516-512-3133

Email: info@creative-biomart.com Fax: 1-631-938-8127

45-1 Ramsey Road, Shirley, NY 11967, USA