

Recombinant Human GAPVD1 Protein, GST-tagged

Cat. No. GAPVD1-4728H **Lot. No.** (See product label)

SPECIFICATION

Product Overview	Human GAPVD1 full-length ORF (AAH21119.1, 1 a.a. - 629 a.a.) recombinant protein with GST-tag at N-terminal.
Species	Human
Source	Wheat Germ
Description	GAPVD1 (GTPase Activating Protein And VPS9 Domains 1) is a Protein Coding gene. Among its related pathways are Vesicle-mediated transport and Clathrin-mediated endocytosis. GO annotations related to this gene include GTPase activator activity and GTPase activating protein binding. An important paralog of this gene is RABGEF1.
Molecular Mass	95.9 kDa
AA Sequence	<p>MQEDES YLLQVLRYLIEFELKESDNPRLLRRGTCAFSILFKLFSEGLFSAKLF LTATL HEPIMQLLVEDEDHLETDPNKLIERFSPSQQEKLFGKEGSDRFRQKVQEMVESNEA KLVALVNKFIGYLKQNTYCFPHSLRWIVSQMYKTLSCVDRLEVGEVRAMCTDLLLAC FICPAVVNPEQYGIISDAPINEVARFNLQVGRLLQQLAMTGSEEGDPRTKSSLGKF DKSCVAAF LDVVIGGRAVETPPLSSVNLLEGLSRTVVYITYSQLITLVNFMKSVMSGD QLREDRMALDNLLANLPPAKPGKSSSLEMPYNTPQLSPATTPANKKNR LPIATRSR SRTNMLMDLHMDHEGSSQETIQEVQPEEVLVISLGTGPQLTPGMISENEVLNMQLS DGGQGDVPVDENKLHGKPKDKTLRFSLCSDNLEGISEGPSNRSNSVSSLDLEGESVS ELGAGPSGSNGVEALQLEHEQATTQDNLDDKLRKFEIRDMMGLTDDRDISETVSE TWSTDVLGSDFDPNIDEDRLQEIAGAAAENMLG SLLCLPGSGSVLLDPCTGSTISET</p>

 Tel: 1-631-559-9269 1-516-512-3133

 Email: info@creative-biomart.com  Fax: 1-631-938-8127

 45-1 Ramsey Road, Shirley, NY 11967, USA

TSEAWSVEVLPSDSEAPDLKQEERLQELESFLDWVAHLMIRMSGRSVPAPAHQASV
LCPA

Applications
Enzyme-linked Immunoabsorbent Assay
Western Blot (Recombinant protein)
Antibody Production
Protein Array

Notes
Best use within three months from the date of receipt of this protein.

Storage
Store at -80 centigrade. Aliquot to avoid repeated freezing and thawing.

Storage Buffer
50 mM Tris-HCl, 10 mM reduced Glutathione, pH=8.0 in the elution buffer.

GENE INFORMATION

Gene Name
GAPVD1 GTPase activating protein and VPS9 domains 1 [Homo sapiens]

Official Symbol
GAPVD1

Synonyms
GAPVD1; GTPase activating protein and VPS9 domains 1; GTPase-activating protein and VPS9 domain-containing protein 1; DKFZP434C212; KIAA1521; GAPex-5; rab5-activating protein 6; RAP6; GAPEX5; MGC138847; MGC138848; DKFZp434C212;

Gene ID
26130

mRNA Refseq
NM_015635

Protein Refseq
NP_056450

MIM
611714

 Tel: 1-631-559-9269 1-516-512-3133

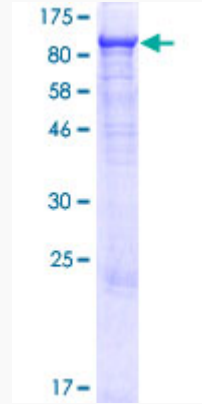
 Email: info@creative-biomart.com  Fax: 1-631-938-8127

 45-1 Ramsey Road, Shirley, NY 11967, USA

UniProt ID

Q14C86

Quality Control
Testing



12.5% SDS-PAGE Stained with Coomassie Blue.

 Tel: 1-631-559-9269 1-516-512-3133

 Email: info@creative-biomart.com  Fax: 1-631-938-8127

 45-1 Ramsey Road, Shirley, NY 11967, USA