

Recombinant Human GARS Protein, His-tagged

Cat. No. GARS-4730H Lot. No. (See product label)

SPECIFICATION

Product Overview	Human GARS full-length recombinant protein with His tag expressed in Escherichia coli.
Species	Human
Source	E.coli
ProteinLength	1-739 aa
Description	This gene encodes glycyl-tRNA synthetase, one of the aminoacyl-tRNA synthetases that charge tRNAs with their cognate amino acids. The encoded enzyme is an (alpha) ₂ dimer which belongs to the class II family of tRNA synthetases. It has been shown to be a target of autoantibodies in the human autoimmune diseases, polymyositis or dermatomyositis. [provided by RefSeq]
Form	Liquid
Molecular Mass	79 kDa
Purity	95.1%
Applications	Western Blot ELISA Functional Study SDS-PAGE

 Tel: 1-631-559-9269 1-516-512-3133

 Email: info@creative-biomart.com  Fax: 1-631-938-8127

 45-1 Ramsey Road, Shirley, NY 11967, USA

Usage	<p>SDS-PAGE</p> <p>Western blot</p> <p>ELISA</p> <p>Antibody production</p> <p>Protein Array</p> <p>Activity assay</p> <p>The optimal working dilution should be determined by the end user.</p>
Storage	Store at -80 centigrade. Aliquot to avoid repeated freezing and thawing.
Concentration	0.40 mg/mL
Storage Buffer	In PBS, pH 7.4 (20 µg/ml Kanamycin)
GENE INFORMATION	
Gene Name	GARS glycyI-tRNA synthetase [Homo sapiens]
Official Symbol	GARS
Synonyms	GARS; glycyI-tRNA synthetase; Charcot Marie Tooth neuropathy 2D, CMT2D; glycine--tRNA ligase; DSMAV; glycine tRNA ligase; GlyRS; SMAD1; AP-4-A synthetase; Charcot-Marie-Tooth neuropathy 2D; diadenosine tetraphosphate synthetase; Charcot-Marie-Tooth neuropathy, neuronal type, D; HMN5; CMT2D;
Gene ID	2617
mRNA Refseq	NM_002047
Protein Refseq	NP_002038

 Tel: 1-631-559-9269 1-516-512-3133

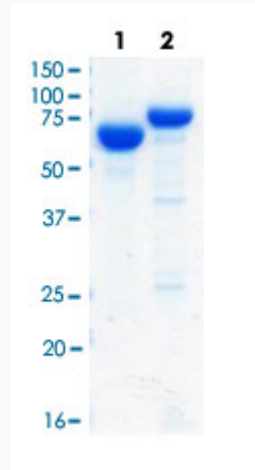
 Email: info@creative-biomart.com  Fax: 1-631-938-8127

 45-1 Ramsey Road, Shirley, NY 11967, USA

MIM 600287

UniProt ID P41250

**Quality Control
Testing**



SDS-PAGE Stained with Coomassie Blue Loading 2 μ g protein in SDS-PAGE:

Lane1: BSA

Lane2: His-GARS.

 Tel: 1-631-559-9269 1-516-512-3133

 Email: info@creative-biomart.com  Fax: 1-631-938-8127

 45-1 Ramsey Road, Shirley, NY 11967, USA