

Recombinant Human GAS2 Protein, Myc/DDK-tagged, C13 and N15-labeled

Cat. No. GAS2-4237H Lot. No. (See product label)

SPECIFICATION

Product Overview

GAS2 MS Standard C13 and N15-labeled recombinant protein (NP_001137302) with a C-terminal MYC/DDK tag, was expressed in HEK293 cells.

Species

Human

Source

HEK293

Description

The protein encoded by this gene is a caspase-3 substrate that plays a role in regulating microfilament and cell shape changes during apoptosis. It can also modulate cell susceptibility to p53-dependent apoptosis by inhibiting calpain activity. Alternative splicing results in multiple transcript variants.

Molecular Mass

34.9 kDa

AA Sequence

MCTALSPKVRSGPGLSDMHQYSQWLASRHEANLLPMKEDLALWLTNLLGKEITAET
FMEKLDNGALLCQLAETMQEKFKESMDANKPTKNLPLKKIPCKTSAPSGSFFARDNT
ANFLSWCRDLGVDCTCFESEGLVLHKQPREVCLCLELGRIAARYGVEPPGLIKLE
KEIEQEETLSAPSPSPSSKSSGKSTGNLLDDAVKRISEDPPCKCPNKFVERLS
QGRYRVGEKILFIRMLHNKHVMVRVGGGWETFAGYLLKHDPGRMLQISRVDGKTSP
IQSKSPTLKMNPDPNYLVVSASYKAKKEIKTRTRPLEQKLISEEDLAANDILDYKDDD
DKV

Purity

> 80% as determined by SDS-PAGE and Coomassie blue staining

Tel: 1-631-559-9269 1-516-512-3133

Email: info@creative-biomart.com Fax: 1-631-938-8127

45-1 Ramsey Road, Shirley, NY 11967, USA

Stability	Stable for 3 months from receipt of products under proper storage and handling conditions.
Storage	Store at -80 centigrade. Avoid repeated freeze-thaw cycles.
Concentration	50 µg/mL as determined by BCA
Storage Buffer	100 mM glycine, 25 mM Tris-HCl, pH 7.3.

GENE INFORMATION

Gene Name	GAS2 growth arrest-specific 2 [Homo sapiens (human)]
Official Symbol	GAS2
Synonyms	GAS2; growth arrest-specific 2; growth arrest-specific protein 2; GAS-2; MGC32610;
Gene ID	2620
mRNA Refseq	NM_001143830
Protein Refseq	NP_001137302
MIM	602835
UniProt ID	O43903

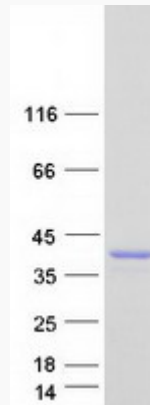
 Tel: 1-631-559-9269 1-516-512-3133

 Email: info@creative-biomart.com  Fax: 1-631-938-8127

 45-1 Ramsey Road, Shirley, NY 11967, USA



SDS-PAGE



Tel: 1-631-559-9269 1-516-512-3133

Email: info@creative-biomart.com Fax: 1-631-938-8127

45-1 Ramsey Road, Shirley, NY 11967, USA