

## Recombinant Human GAS2 Protein, GST-tagged

Cat. No. GAS2-4733H Lot. No. (See product label)

### SPECIFICATION

<b>Product Overview</b>	Human GAS2 full-length ORF ( NP_005247.1, 1 a.a. - 313 a.a.) recombinant protein with GST-tag at N-terminal.
<b>Species</b>	Human
<b>Source</b>	Wheat Germ
<b>Description</b>	The protein encoded by this gene is a caspase-3 substrate that plays a role in regulating microfilament and cell shape changes during apoptosis. It can also modulate cell susceptibility to p53-dependent apoptosis by inhibiting calpain activity. Multiple alternatively spliced variants, encoding the same protein, have been identified. [provided by RefSeq]
<b>Molecular Mass</b>	61.3 kDa
<b>AA Sequence</b>	MCTALSPKVRSGPGLSDMHQYSQWLASRHEANLLPMKEDLALWLTNLLGKEITAET FMEKLDNGALLCQLAETMQEKFKESMDANKPTKNLPLKKIPCKTSAPSGSFFARDNT ANFLSWCRDLGVDCTCFESEGLVLHKQPREVCLCLELGRIAARYGVEPPGLIKLE KEIEQEETLSAPSPSPSSKSSGKKSTGNLLDDAVKRISEDPPCKCPNKFCVERLS QGRYRVGEKILFIRMLHNKHVMVRVGGGWETFAGYLLKHDPGRMLQISRVDGKTSP IQSKSPTLKMNPDNYLVVSASYKAKKEIK
<b>Applications</b>	Enzyme-linked Immunoabsorbent Assay Western Blot (Recombinant protein) Antibody Production

Tel: 1-631-559-9269 1-516-512-3133

Email: [info@creative-biomart.com](mailto:info@creative-biomart.com) Fax: 1-631-938-8127

45-1 Ramsey Road, Shirley, NY 11967, USA

**Protein Array**

<b>Notes</b>	Best use within three months from the date of receipt of this protein.
<b>Storage</b>	Store at -80 centigrade. Aliquot to avoid repeated freezing and thawing.
<b>Storage Buffer</b>	50 mM Tris-HCl, 10 mM reduced Glutathione, pH=8.0 in the elution buffer.

**GENE INFORMATION**

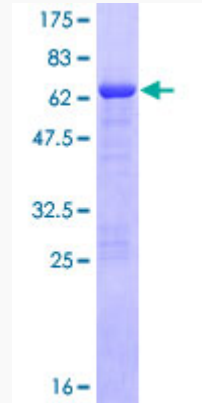
<b>Gene Name</b>	<a href="#">GAS2 growth arrest-specific 2 [ Homo sapiens ]</a>
<b>Official Symbol</b>	<a href="#">GAS2</a>
<b>Synonyms</b>	GAS2; growth arrest-specific 2; growth arrest-specific protein 2; GAS-2; MGC32610;
<b>Gene ID</b>	<a href="#">2620</a>
<b>mRNA Refseq</b>	<a href="#">NM_001143830</a>
<b>Protein Refseq</b>	<a href="#">NP_001137302</a>
<b>MIM</b>	<a href="#">602835</a>
<b>UniProt ID</b>	<a href="#">O43903</a>

 Tel: 1-631-559-9269 1-516-512-3133

 Email: [info@creative-biomart.com](mailto:info@creative-biomart.com)  Fax: 1-631-938-8127

 45-1 Ramsey Road, Shirley, NY 11967, USA

**Quality Control  
Testing**



12.5% SDS-PAGE Stained with Coomassie Blue.

 Tel: 1-631-559-9269 1-516-512-3133

 Email: [info@creative-biomart.com](mailto:info@creative-biomart.com)  Fax: 1-631-938-8127

 45-1 Ramsey Road, Shirley, NY 11967, USA