

Recombinant Human GAS2L1 Protein, GST-tagged

Cat. No. GAS2L1-4736H Lot. No. (See product label)

SPECIFICATION

Product Overview	Human GAS2L1 full-length ORF (NP_006469.2, 1 a.a. - 681 a.a.) recombinant protein with GST-tag at N-terminal.
Species	Human
Source	Wheat Germ
Description	The protein encoded by this gene, a member of the GAS2 family, is similar in sequence to the mouse protein Gas2, an actin-associated protein expressed at high levels in growth-arrested cells. Expression of the mouse Gas2 gene is negatively regulated by serum and growth factors. Three transcript variants encoding two different isoforms have been found for this gene. [provided by RefSeq]
Molecular Mass	99.1 kDa
AA Sequence	MADPVAGIAGSAAKSVRPFSSSEAYVEAMKEDLAEWLNALYGLGLPGGGDGFLTGL ATGTTLCQHANA VTEAARALAAARPARGVAFQAHSVVPGSFMARDNVATFIGWCR VELGVPEVLMFETEDLVLRKNEKSVVLCLEVARRGARLGLLAPRLVQFEQEIEREL RAAPPAPNAPAAGEDTTETAPAPGTPARGPRMTPSDLRNLDELVREILGRCTCPDQ FPMIKVSEGKYRVGDSSLLIFVRVLRSHVMVRVGGGWDITLEHYLDKHDPCRCSSA HRPPQPRVCTFSPQRVSPTTSPRPASVPGSERRGSRPEMTPVSLRSTKEGPETP PRPRDQLPPHPRSRRYSGDSDSSASSAQSGPLGTRSDDTGTGPRRERPSRRLTTG TPASPRRPPALRSQSRDRLDRGRPRGAPGGRGAQLSVSPARRARSQSREEQAVL LVRRDRDGQHSWVPRGRGSGGSGRSTPQTTPRARSPAAPRLSRVSSPSPELGTP

Tel: 1-631-559-9269 1-516-512-3133

Email: info@creative-biomart.com Fax: 1-631-938-8127

45-1 Ramsey Road, Shirley, NY 11967, USA



ASIFRTPLQLDPQQEQQLFRRLEEEFLANARALEAVASVTPTGPAPDPARAPDPPAP
DSAYCSSSSSSSSLSVLGGKCGQPGDSGRTANGLPGPRSQUALSSSSDEGSPCPG
MGGPLDAPGSPLACTEPSRTWARGRMDTQPDRKPSRIPTPRGPRRPSGPAELGT
WHALHSVTPRAEPDSWM

Applications
Enzyme-linked Immunoabsorbent Assay
Western Blot (Recombinant protein)
Antibody Production
Protein Array

Notes Best use within three months from the date of receipt of this protein.

Storage Store at -80 centigrade. Aliquot to avoid repeated freezing and thawing.

Storage Buffer 50 mM Tris-HCl, 10 mM reduced Glutathione, pH=8.0 in the elution buffer.

GENE INFORMATION

Gene Name [GAS2L1 growth arrest-specific 2 like 1 \[Homo sapiens \]](#)

Official Symbol [GAS2L1](#)

Synonyms GAS2L1; growth arrest-specific 2 like 1; GAS2-like protein 1; GAR22; GAS2-related protein on chromosome 22; growth arrest-specific protein 2-like 1; MGC17243;

Gene ID [10634](#)

mRNA Refseq [NM_006478](#)

Protein Refseq [NP_006469](#)

Tel: 1-631-559-9269 1-516-512-3133

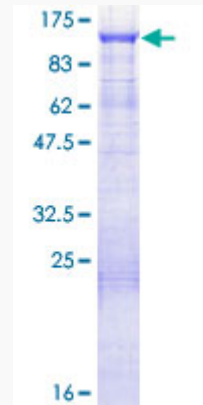
Email: info@creative-biomart.com Fax: 1-631-938-8127

45-1 Ramsey Road, Shirley, NY 11967, USA

MIM 602128

UniProt ID Q99501

**Quality Control
Testing**



12.5% SDS-PAGE Stained with Coomassie Blue.

 Tel: 1-631-559-9269 1-516-512-3133

 Email: info@creative-biomart.com  Fax: 1-631-938-8127

 45-1 Ramsey Road, Shirley, NY 11967, USA