

## Recombinant Human GAS2L2 Protein, GST-tagged

Cat. No. GAS2L2-4737H Lot. No. (See product label)

### SPECIFICATION

<b>Product Overview</b>	Human GAS2L2 partial ORF ( NP_644814, 665 a.a. - 776 a.a.) recombinant protein with GST-tag at N-terminal.
<b>Species</b>	Human
<b>Source</b>	Wheat Germ
<b>Description</b>	The protein encoded by this gene appears to crosslink microtubules and microfilaments and may be part of the cytoskeleton. This gene is mainly expressed in skeletal muscle. [provided by RefSeq, Jul 2011]
<b>Molecular Mass</b>	38.06 kDa
<b>AA Sequence</b>	LLKVDLEAWKAAPTGSPKPAVTPGPGSLKGLGARQSGPRTKASLSAKGTHMRKV PPQGGQDCSASTVSASPEAPTPSPLDPNSDKAKACLKGRRTLKPKRVPSIYKLLK
<b>Applications</b>	Enzyme-linked Immunoabsorbent Assay Western Blot (Recombinant protein) Antibody Production Protein Array
<b>Notes</b>	Best use within three months from the date of receipt of this protein.
<b>Storage</b>	Store at -80 centigrade. Aliquot to avoid repeated freezing and thawing.

 Tel: 1-631-559-9269 1-516-512-3133

 Email: [info@creative-biomart.com](mailto:info@creative-biomart.com)  Fax: 1-631-938-8127

 45-1 Ramsey Road, Shirley, NY 11967, USA

**Storage Buffer** 50 mM Tris-HCl, 10 mM reduced Glutathione, pH=8.0 in the elution buffer.

## GENE INFORMATION

**Gene Name** GAS2L2 growth arrest specific 2 like 2 [ Homo sapiens (human) ]

**Official Symbol** GAS2L2

**Synonyms** GAS2L2; growth arrest specific 2 like 2; GAR17; GAS2-like protein 2; GAS2-related protein on chromosome 17

**Gene ID** 246176

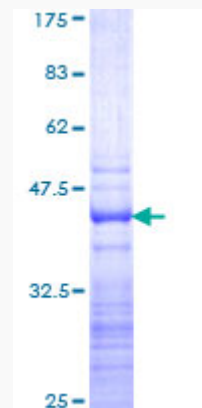
**mRNA Refseq** NM\_139285

**Protein Refseq** NP\_644814

**MIM** 611398

**UniProt ID** Q8NHY3

**Quality Control Testing**



 Tel: 1-631-559-9269 1-516-512-3133

 Email: [info@creative-biomart.com](mailto:info@creative-biomart.com)  Fax: 1-631-938-8127

 45-1 Ramsey Road, Shirley, NY 11967, USA



12.5% SDS-PAGE Stained with Coomassie Blue.

 Tel: 1-631-559-9269 1-516-512-3133

 Email: [info@creative-biomart.com](mailto:info@creative-biomart.com)  Fax: 1-631-938-8127

 45-1 Ramsey Road, Shirley, NY 11967, USA