

## Recombinant Human GAS2L3 Protein, GST-tagged

Cat. No. GAS2L3-4738H Lot. No. (See product label)

### SPECIFICATION

<b>Product Overview</b>	Human GAS2L3 full-length ORF ( NP_777602.1, 1 a.a. - 694 a.a.) recombinant protein with GST-tag at N-terminal.
<b>Species</b>	Human
<b>Source</b>	Wheat Germ
<b>Description</b>	GAS2L3 (Growth Arrest Specific 2 Like 3) is a Protein Coding gene. GO annotations related to this gene include actin binding and microtubule binding. An important paralog of this gene is GAS2.
<b>Molecular Mass</b>	101.6 kDa
<b>AA Sequence</b>	<p>MQPAIQVWFGEDLPLSPRSPLTPRHGPGLANVCQYDEWIAVRHEATLLPMQEDLSI  WLSGLLGIKVKAEKLLLELDNGVLLCQLIDVLQNMVKTCSNSEESEGNFPMRKVPCKKD  AASGSFFARDNTANFLHWCRDIGVDETYLFESEGLVLHKDPRQVYLCLLEIGRIVSR  YGVEPPVLVKLEKEIELEETLLNTSGPEDSISIPKSCCRHEELHEAVKHIAEDPPCSCS  HRFSIEYLSEGRYRLGDKILFIRMLHGKHVMVRVGGGWDTLQGFLLYDPCRILQFA  TLEQKILAFQKGSNESVPDSPARTPQPPEMNPLSAVNMFQKQNSKPSVPVSIPKSK  EKQGRPPGALVPASSLKGGNLGSMVRSKLPNSPAASSHPKPKSSKGITKKPQAPS  NNASSSLASLNPVGKNTSSPALPRTAPCISESPRKCISSPNTPKAKVIPAQNSADLPE  STLLPNKCSGKTQPKYLKHNHISSRDNAVSHLAAHSNSSSKCPKLPKANIPVRPKPS  FQSSAKMTKTSSKIATGLGTQSQPSDGAPQAKPVPAQKLKLSALNLPVSVSSVS  PVKATQKSKDKNIVSATKKQPQNKSAFQKTGPSSLKSPGRTPLSIVSLPQSSTKTQT</p>

Tel: 1-631-559-9269 1-516-512-3133

Email: [info@creative-biomart.com](mailto:info@creative-biomart.com) Fax: 1-631-938-8127

45-1 Ramsey Road, Shirley, NY 11967, USA

APKSAQTVAKSQHSTKGPSPRSKTPASIRKPPSSVKDADSGDKKPTAKKKEDDDHY  
FVMTGSKKPRK

**Applications**  
Enzyme-linked Immunoabsorbent Assay  
Western Blot (Recombinant protein)  
Antibody Production  
Protein Array

**Notes** Best use within three months from the date of receipt of this protein.

**Storage** Store at -80 centigrade. Aliquot to avoid repeated freezing and thawing.

**Storage Buffer** 50 mM Tris-HCl, 10 mM reduced Glutathione, pH=8.0 in the elution buffer.

## GENE INFORMATION

**Gene Name** [GAS2L3 growth arrest-specific 2 like 3 \[ Homo sapiens \]](#)

**Official Symbol** [GAS2L3](#)

**Synonyms** GAS2L3; growth arrest-specific 2 like 3; GAS2-like protein 3; growth arrest-specific protein 2-like 3; G2L3;

**Gene ID** [283431](#)

**mRNA Refseq** [NM\\_174942](#)

**Protein Refseq** [NP\\_777602](#)

**MIM** [617224](#)

 Tel: 1-631-559-9269 1-516-512-3133

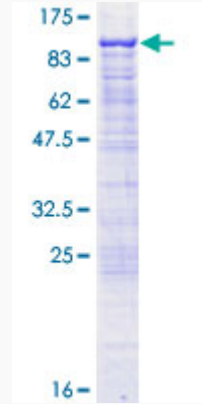
 Email: [info@creative-biomart.com](mailto:info@creative-biomart.com)  Fax: 1-631-938-8127

 45-1 Ramsey Road, Shirley, NY 11967, USA

UniProt ID

Q86XJ1

Quality Control  
Testing



12.5% SDS-PAGE Stained with Coomassie Blue.

 Tel: 1-631-559-9269 1-516-512-3133

 Email: [info@creative-biomart.com](mailto:info@creative-biomart.com)  Fax: 1-631-938-8127

 45-1 Ramsey Road, Shirley, NY 11967, USA