

# Recombinant Human growth arrest specific 6 Protein, His tagged

**Cat. No.** GAS6-001H    **Lot. No.** (See product label)

## SPECIFICATION

<b>Product Overview</b>	Recombinant Human GAS6 Protein with C-His tag was expressed in HEK293.
<b>Species</b>	Human
<b>Source</b>	HEK293
<b>ProteinLength</b>	118-678 aa
<b>Description</b>	This gene encodes a gamma-carboxyglutamic acid (Gla)-containing protein thought to be involved in the stimulation of cell proliferation. This gene is frequently overexpressed in many cancers and has been implicated as an adverse prognostic marker. Elevated protein levels are additionally associated with a variety of disease states, including venous thromboembolic disease, systemic lupus erythematosus, chronic renal failure, and preeclampsia.
<b>Tag</b>	C-His
<b>Molecular Mass</b>	63 kDa
<b>AA Sequence</b>	DQCTPNPCDRKGTQACQDLMGNFFCLCKAGWGGRLCDKDVNECSQENGGCLQIC HNKPGSFHCSCHSGFELSSDGRTCQDIDECADSEACGEARCKNLPGSYSCLCDEG FAYSSQEKACRDVDECLQGRCEQVCVNSPGSYTCHCDGRGGLKLSQDMDTCEDIL PCVPFSVAKSVKSLYLGRMFSGTPVIRLRFKRLQPTRLVAEFDFTDFPEGILLFAGG HQDSTWIVLALRAGRLELQLRYNGVGRVTSSGPVINHGMWQTISVEELARNLVIKVN

 Tel: 1-631-559-9269    1-516-512-3133

 Email: [info@creative-biomart.com](mailto:info@creative-biomart.com)     Fax: 1-631-938-8127

 45-1 Ramsey Road, Shirley, NY 11967, USA

RDAVMKIAVAGDLFQPERGLYHLNLTVGGIPFHEKDLVQPINPRLDGCMRSWNWLN  
 GEDTTIQETVKVNTRMQCFSVTERGSFYPGSGFAFYSLDYMRTPLDVGTESTWEVE  
 VVAHIRPAADTGVLFWAPDLRAVPLSVALVDYHSTKCLKKQLVVLAVEHTALALM  
 EIKVCDGQEHVTVSLRDGEATLEVDGTRGQSEVSAAQLQERLAVLERHLRSPVLT  
 FAGGLPDVPVTSAPVTAFYRGCMTLEVNRRLDLDEAAYKHSDITAHSCPPVEPAAA  
 HHHHHHHH

**Endotoxin** < 1 EU/μg by LAL

**Purity** > 90% by SDS-PAGE

**Storage** Store it under sterile conditions at -20 to -80 centigrade. It is recommended that the protein be aliquoted for optimal storage. Avoid repeated freeze-thaw cycles.

**Storage Buffer** Sterile PBS, pH7.4

**Concentration** 1 mg/mL by BCA

## GENE INFORMATION

**Gene Name** [GAS6 growth arrest specific 6 \[ Homo sapiens \(human\) \]](#)

**Official Symbol** [GAS6](#)

**Synonyms** GAS6; growth arrest-specific 6; AXLLG; growth arrest-specific protein 6; AXL stimulatory factor; AXSF; DKFZp666G247; FLJ34709; AXL receptor tyrosine kinase ligand

**Gene ID** [2621](#)

**mRNA Refseq** [NM\\_000820](#)

 Tel: 1-631-559-9269 1-516-512-3133

 Email: [info@creative-biomart.com](mailto:info@creative-biomart.com)  Fax: 1-631-938-8127

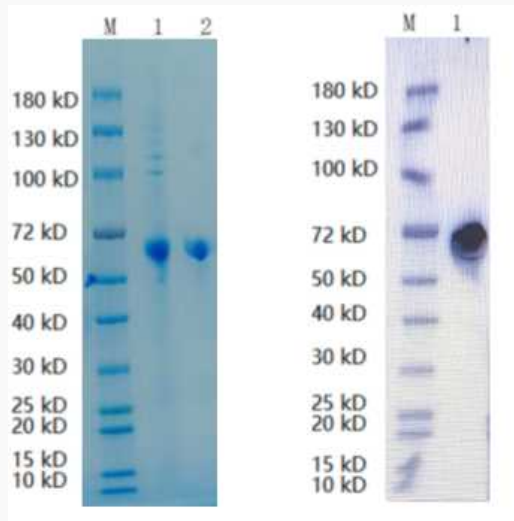
 45-1 Ramsey Road, Shirley, NY 11967, USA

**Protein Refseq** NP\_000811

**MIM** 600441

**UniProt ID** Q14393

Reducing 4%-20%  
SDS-PAGE (CBB  
stained) and WB  
(Anti-His Mouse  
Monoclonal  
antibody) analysis  
profiles of purified  
GAS6.



1. GAS6: 2  $\mu$ g
2. BSA: 1.25  $\mu$ g

 Tel: 1-631-559-9269 1-516-512-3133

 Email: [info@creative-biomart.com](mailto:info@creative-biomart.com)  Fax: 1-631-938-8127

 45-1 Ramsey Road, Shirley, NY 11967, USA