

Active Recombinant Human GAS6 protein, His-tagged

Cat. No. GAS6-383H Lot. No. (See product label)

SPECIFICATION

Product Overview	Active Recombinant Human GAS6 protein is produced by our Mammalian expression system and the target gene encoding Ala31-Ala678 is expressed with a His tag at the C-terminus.
Species	Human
Source	Mammalian cells
ProteinLength	31-678 aa
Form	Supplied as a 0.2 µm filtered solution of PBS, 10% Glycerol, pH 7.4.
Bio-activity	Immobilized Human AXL-His at 10µg/ml (100 µl/well) can bind Human GAS6-His: Biotinylated by NHS-biotin prior to testing The ED50 of Recombinant Human GAS6-His is 0.04466 ug/ml.
Molecular Mass	72.7 KDa
Endotoxin	< 1 EU/g as determined by LAL test.
Purity	Greater than 95% as determined by reducing SDS-PAGE.
Storage	Store at ≤-70°C, stable for 6 months after receipt. Store at ≤-70°C, stable for 3 months under sterile conditions after opening. Please minimize freeze-thaw cycles.

 Tel: 1-631-559-9269 1-516-512-3133

 Email: info@creative-biomart.com  Fax: 1-631-938-8127

 45-1 Ramsey Road, Shirley, NY 11967, USA

Concentration	0.2 ug/ul
protein Refseq-Weblink	http://www.ncbi.nlm.nih.gov/protein/NP_000811.1
Unit ID	Q14393
Unit ID-Weblink	https://www.uniprot.org/uniprot/Q14393

GENE INFORMATION

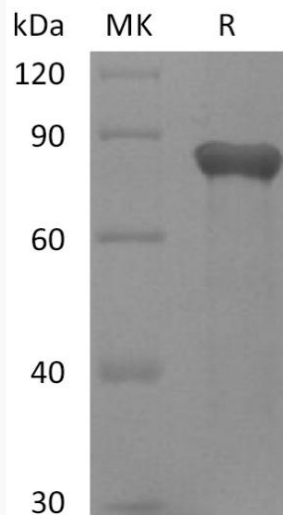
Gene Name	GAS6 growth arrest-specific 6 [Homo sapiens]
Official Symbol	GAS6
Synonyms	GAS6; growth arrest-specific 6; AXLLG; growth arrest-specific protein 6; AXL stimulatory factor; AXSF; DKFZp666G247; FLJ34709; AXL receptor tyrosine kinase ligand;
Gene ID	2621
mRNA Refseq	NM_000820
protein Refseq	NP_000811
MIM	600441

 Tel: 1-631-559-9269 1-516-512-3133

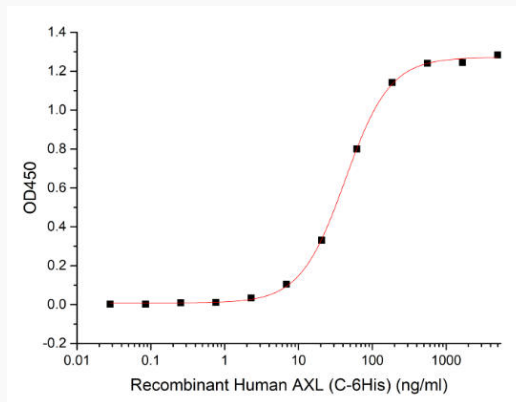
 Email: info@creative-biomart.com  Fax: 1-631-938-8127

 45-1 Ramsey Road, Shirley, NY 11967, USA

SDS-PAGE



ELISA



 Tel: 1-631-559-9269 1-516-512-3133

 Email: info@creative-biomart.com  Fax: 1-631-938-8127

 45-1 Ramsey Road, Shirley, NY 11967, USA