

## Active Recombinant Human GAS6 Protein(Leu136~Phe311), His-tagged

Cat. No. GAS6-546H Lot. No. (See product label)

### SPECIFICATION

#### Product Overview

Recombinant Human GAS6 Protein(Leu136~Phe311), fused with N-terminal His tag, was expressed in E. coli.

#### Species

Human

#### Source

E.coli

#### ProteinLength

Leu136~Phe311

#### Form

20mM Tris, 150mM NaCl, pH8.0, containing 1mM EDTA, 0.01% sarcosyl, 5% trehalose, and Proclin300.

#### Bio-activity

Growth arrest-specific 6, also known as GAS6, is a gamma-carboxyglutamic acid (Gla) domain-containing protein thought to be involved in the stimulation of cell proliferation. It has been reported that both PC-3 and DU 145 human prostate cancer cell lines are stimulated to proliferate by Gas6, however, this proliferative response strictly correlates with the expression of the Axl receptor, being higher in DU 145 cells. To test the proliferative effect of Gas6, DU 145 cells were seeded into triplicate wells of 96-well plates at a density of 2,000 cells/well and allowed to attach overnight, then the medium was replaced with serum-free standard DMEM prior to the addition of various concentrations of GAS6. After incubated for 72h, cells were observed by inverted microscope and cell proliferation was measure by Cell Counting Kit-8 (CCK-8). Briefly, 10 $\mu$ L of CCK-8 solution was added to each well of the plate, then measure

 Tel: 1-631-559-9269 1-516-512-3133

 Email: [info@creative-biomart.com](mailto:info@creative-biomart.com)  Fax: 1-631-938-8127

 45-1 Ramsey Road, Shirley, NY 11967, USA

the absorbance at 450nm using a microplate reader after incubating the plate for 1-4 hours at 37°C.

**Molecular Mass** 24kDa

**Purity** >92%

**Storage** Samples are stable for up to twelve months from date of receipt at -20°C to -80°C. Store it under sterile conditions at -20°C to -80°C. It is recommended that the protein be aliquoted for optimal storage. Avoid repeated freeze-thaw cycles.

**Reconstitution** Reconstitute in 20mM Tris, 150mM NaCl (pH8.0) to a concentration of 0.1-1.0 mg/mL. Do not vortex.

## GENE INFORMATION

**Gene Name** GAS6 growth arrest specific 6 [ Homo sapiens (human) ]

**Official Symbol** GAS6

**Synonyms** GAS6; growth arrest specific 6; AXSF; AXLLG; growth arrest-specific protein 6; AXL receptor tyrosine kinase ligand; AXL stimulatory factor

**Gene ID** 2621

**mRNA Refseq** NM\_000820

**Protein Refseq** NP\_000811

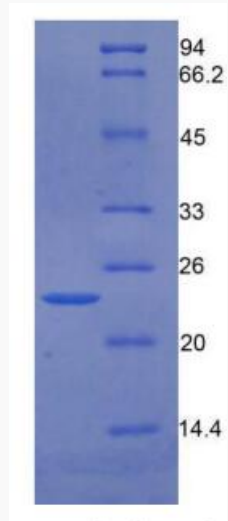
**UniProt ID** Q14393

 Tel: 1-631-559-9269 1-516-512-3133

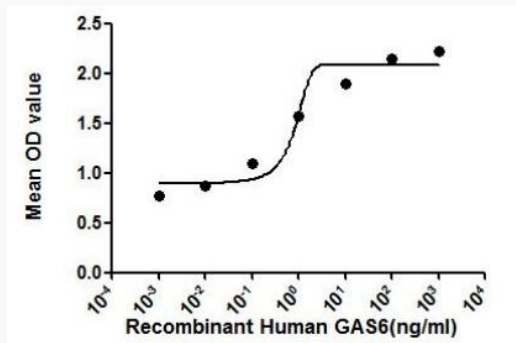
 Email: [info@creative-biomart.com](mailto:info@creative-biomart.com)  Fax: 1-631-938-8127

 45-1 Ramsey Road, Shirley, NY 11967, USA

SDS-PAGE



Activity



 Tel: 1-631-559-9269 1-516-512-3133

 Email: [info@creative-biomart.com](mailto:info@creative-biomart.com)  Fax: 1-631-938-8127

 45-1 Ramsey Road, Shirley, NY 11967, USA