

Recombinant Human GAS6 protein, His-tagged

Cat. No. GAS6-547H **Lot. No.** (See product label)

SPECIFICATION

Product Overview	Recombinant Human GAS6 protein(Ser503~Asp664), fused with N-terminal His Tag, was expressed in E. coli.
Species	Human
Source	E.coli
ProteinLength	Ser503~Asp664
Tag	N-His
Form	20mM Tris, 150mM NaCl, pH8.0, containing 1mM EDTA, 1mM DTT, 0.01% SKL, 5% Trehalose and Proclin300.
Molecular Mass	21kDa
Endotoxin	<1.0EU per 1µg (determined by the LAL method)
Purity	> 95%
Storage	Avoid repeated freeze/thaw cycles. Store at 2-8°C for one month. Aliquot and store at -80°C for 12 months.
Reconstitution	Reconstitute in 20mM Tris, 150mM NaCl (pH8.0) to a concentration of 0.1-1.0 mg/mL. Do not vortex.

 Tel: 1-631-559-9269 1-516-512-3133

 Email: info@creative-biomart.com  Fax: 1-631-938-8127

 45-1 Ramsey Road, Shirley, NY 11967, USA

GENE INFORMATION

Gene Name	GAS6 growth arrest-specific 6 [Homo sapiens]
Official Symbol	GAS6
Synonyms	GAS6; growth arrest-specific 6; AXLLG; growth arrest-specific protein 6; AXL stimulatory factor; AXSF; DKFZp666G247; FLJ34709; AXL receptor tyrosine kinase ligand;
Gene ID	2621
mRNA Refseq	NM_000820
Protein Refseq	NP_000811
MIM	600441
UniProt ID	Q14393

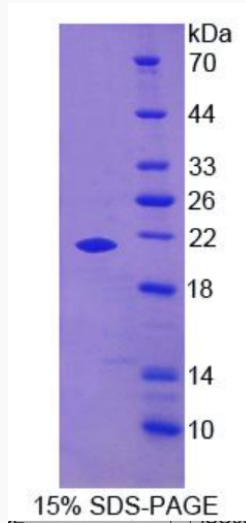
 Tel: 1-631-559-9269 1-516-512-3133

 Email: info@creative-biomart.com  Fax: 1-631-938-8127

 45-1 Ramsey Road, Shirley, NY 11967, USA



SDS-PAGE



Tel: 1-631-559-9269 1-516-512-3133

Email: info@creative-biomart.com Fax: 1-631-938-8127

45-1 Ramsey Road, Shirley, NY 11967, USA