

## Recombinant Human GAS6 (Ala31-Ala678), His-tagged

Cat. No. GAS6-622H Lot. No. (See product label)

### SPECIFICATION

<b>Product Overview</b>	A DNA sequence encoding the mature human GAS6 (Ala31-Ala678) isoform 1 with 6 His tag on the N-Terminus was expressed in E.Coli. This protein was purified by Ni-NTA column.
<b>Species</b>	Human
<b>Source</b>	E.coli
<b>Protein Length</b>	31-678 a.a.
<b>Description</b>	This gene product is a gamma-carboxyglutamic acid (Gla)-containing protein thought to be involved in the stimulation of cell proliferation, and may play a role in thrombosis. Alternatively spliced transcript variants encoding different isoforms have been found for this gene.
<b>Formulation</b>	Lyophilized 100ug human GAS6 in 50ul of, Carry free.
<b>Application</b>	ELISA
<b>Molecular Weight</b>	89.9KDa
<b>Purity</b>	>90% in SDS-PAGE gel PBS lyophilized.
<b>Sequence</b>	Mature Form of human GAS6 (Ala31-Ala678)

 Tel: 1-631-559-9269 1-516-512-3133

 Email: [info@creative-biomart.com](mailto:info@creative-biomart.com)  Fax: 1-631-938-8127

 45-1 Ramsey Road, Shirley, NY 11967, USA

<b>Reconstitution</b>	Add 500ul deionized water to the vial to prepare a working stock solution at 200ug/mL. Allow to set at least 30 minutes at 4°C, mix well.
<b>Storage</b>	Store lyophilized protein at -20°C or -70°C. Lyophilized protein is stable for up to 6 months from date of receipt at -20°C to -70°C. Upon reconstitution, this protein can be stored at -20°C for a few weeks or at -70°C in a manual defrost freezer for long term storage (six months). Aliquot reconstituted protein to avoid repeated freezing/thawing cycles.

## GENE INFORMATION

<b>Gene Name</b>	<a href="#">GAS6 growth arrest-specific 6 [ Homosapiens ]</a>
<b>Official Symbol</b>	<a href="#">GAS6</a>
<b>Synonyms</b>	GAS6; GAS-6; growth arrest-specific 6; AXSF; AXLLG; FLJ34709; DKFZp666G247; growth arrest-specific protein 6; AXL stimulatory factor; AXL receptor tyrosine kinase ligand; OTTHUMP00000018777
<b>Gene ID</b>	<a href="#">2621</a>
<b>mRNA Refseq</b>	<a href="#">NM_000820</a>
<b>Protein Refseq</b>	<a href="#">NP_000811</a>
<b>MIM</b>	600441
<b>UniProt ID</b>	<a href="#">Q14393</a>
<b>Chromosome Location</b>	13q34

 Tel: 1-631-559-9269 1-516-512-3133

 Email: [info@creative-biomart.com](mailto:info@creative-biomart.com)  Fax: 1-631-938-8127

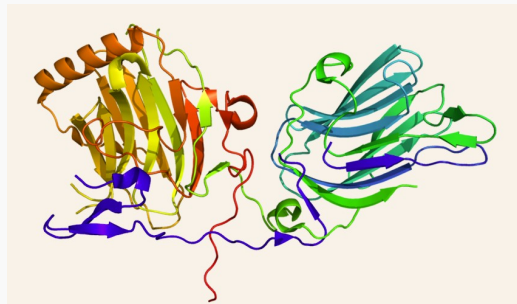
 45-1 Ramsey Road, Shirley, NY 11967, USA

**Pathway**

Cellsurface interactions at the vascular wall; Gamma-carboxylation of proteinprecursors; Gamma-carboxylation, transport, and amino-terminal cleavage ofproteins; Hemostasis; Metabolism of proteins; PTM: gamma carboxylation, hypusine formation and arylsulfatase activation; Platelet activation, signaling and aggregation; Platelet degranulation; Post-translational proteinmodification; Removal of aminoterminal propeptides from gamma-carboxylatedproteins; Response to elevated platelet cytosolic Ca<sup>2+</sup>; Transport of gamma-carboxylated protein precursors from the endoplasmic reticulum to theGolgi apparatus

**Function**

calciumion binding; receptor agonist activity; receptor binding; receptor tyrosinekinase binding

**PDB rendering based on 1h30.**

 Tel: 1-631-559-9269 1-516-512-3133

 Email: [info@creative-biomart.com](mailto:info@creative-biomart.com)  Fax: 1-631-938-8127

 45-1 Ramsey Road, Shirley, NY 11967, USA