

## Recombinant Human GAS7 Protein, GST-tagged

Cat. No. GAS7-4740H Lot. No. (See product label)

### SPECIFICATION

<b>Product Overview</b>	Human GAS7 full-length ORF ( NP_958836.1, 1 a.a. - 416 a.a.) recombinant protein with GST-tag at N-terminal.
<b>Species</b>	Human
<b>Source</b>	Wheat Germ
<b>Description</b>	Growth arrest-specific 7 is expressed primarily in terminally differentiated brain cells and predominantly in mature cerebellar Purkinje neurons. GAS7 plays a putative role in neuronal development. Several transcript variants encoding proteins which vary in the N-terminus have been described. [provided by RefSeq]
<b>Molecular Mass</b>	74.1 kDa
<b>AA Sequence</b>	<p>MKPGMVPPPPGEESQTVILPPGWQSYLSPQGRRYYVNTTTNETTWERPSSSPGIP          ASPGSHRSSLPPTVNGYHASGTPAHPPEAHMSVRKSTGDSQNLGSSSPSKKQSK          ENTITINCVTFPHPDTPMEQQLLKPTSEWSYCDYFWADKKDPQGNGTVAGFELLQK          QLKGKQMOKEMSEFIRERIKIEEDYAKNLAKLSQNSLASQEEGSLGEAWAQVKKSLA          DEAEVHLKFSAKLHSEVEKPLMNFRENFKKDMKKCDHHIADLRKQLASRYASVEKA          RKALTERQRDLEMKTQQLLEIKLSNKTEEDIKKARRKSTQAGDDLMRCVDLYNQAQS          KWFEEMVTTTTLELERLEVERVEMIRQHLQCQYTLRHETDMFNQSTVEPVDQLLRKV          DPAKDRELWVREHKTGNIRPVDMEI</p>
<b>Applications</b>	Enzyme-linked Immunoabsorbent Assay Western Blot (Recombinant protein)

 Tel: 1-631-559-9269 1-516-512-3133

 Email: [info@creative-biomart.com](mailto:info@creative-biomart.com)  Fax: 1-631-938-8127

 45-1 Ramsey Road, Shirley, NY 11967, USA

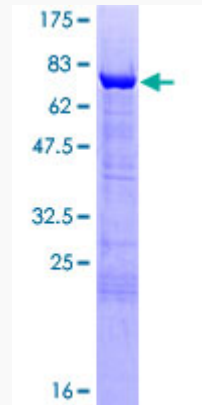
	Antibody Production Protein Array
<b>Notes</b>	Best use within three months from the date of receipt of this protein.
<b>Storage</b>	Store at -80 centigrade. Aliquot to avoid repeated freezing and thawing.
<b>Storage Buffer</b>	50 mM Tris-HCl, 10 mM reduced Glutathione, pH=8.0 in the elution buffer.
<b>GENE INFORMATION</b>	
<b>Gene Name</b>	<a href="#">GAS7 growth arrest-specific 7 [ Homo sapiens ]</a>
<b>Official Symbol</b>	<a href="#">GAS7</a>
<b>Synonyms</b>	GAS7; growth arrest-specific 7; growth arrest-specific protein 7; KIAA0394; MGC1348; MLL/GAS7 fusion protein; MLL/GAS7;
<b>Gene ID</b>	<a href="#">8522</a>
<b>mRNA Refseq</b>	<a href="#">NM_001130831</a>
<b>Protein Refseq</b>	<a href="#">NP_001124303</a>
<b>MIM</b>	<a href="#">603127</a>
<b>UniProt ID</b>	<a href="#">O60861</a>

 Tel: 1-631-559-9269 1-516-512-3133

 Email: [info@creative-biomart.com](mailto:info@creative-biomart.com)  Fax: 1-631-938-8127

 45-1 Ramsey Road, Shirley, NY 11967, USA

**Quality Control  
Testing**



12.5% SDS-PAGE Stained with Coomassie Blue.

 Tel: 1-631-559-9269 1-516-512-3133

 Email: [info@creative-biomart.com](mailto:info@creative-biomart.com)  Fax: 1-631-938-8127

 45-1 Ramsey Road, Shirley, NY 11967, USA