

Recombinant Human GAST Protein, GST-tagged

Cat. No. GAST-4742H Lot. No. (See product label)

SPECIFICATION

Product Overview	Human GAST full-length ORF (NP_000796.1, 1 a.a. - 101 a.a.) recombinant protein with GST-tag at N-terminal.
Species	Human
Source	Wheat Germ
Description	Gastrin is a hormone whose main function is to stimulate secretion of hydrochloric acid by the gastric mucosa, which results in gastrin formation inhibition. This hormone also acts as a mitogenic factor for gastrointestinal epithelial cells. Gastrin has two biologically active peptide forms, G34 and G17. [provided by RefSeq
Molecular Mass	37.8 kDa
AA Sequence	MQRLCVYVLI FALALAAFSEASWKPRSQQPDAPLGTGANRDLELPWLEQQGPASHH RRQLGPQGPPHLVADPSKKQGPWLEEEEEAYGWMDFGRRSAEDEN
Applications	Enzyme-linked Immunoabsorbent Assay Western Blot (Recombinant protein) Antibody Production Protein Array
Notes	Best use within three months from the date of receipt of this protein.
Storage	Store at -80 centigrade. Aliquot to avoid repeated freezing and thawing.

 Tel: 1-631-559-9269 1-516-512-3133

 Email: info@creative-biomart.com  Fax: 1-631-938-8127

 45-1 Ramsey Road, Shirley, NY 11967, USA

Storage Buffer 50 mM Tris-HCl, 10 mM reduced Glutathione, pH=8.0 in the elution buffer.

GENE INFORMATION

Gene Name GAST gastrin [Homo sapiens]

Official Symbol GAST

Synonyms GAST; gastrin; GAS;

Gene ID 2520

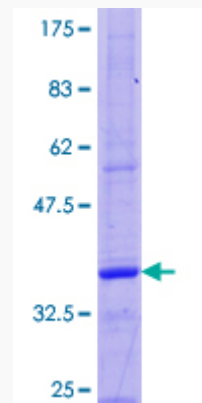
mRNA Refseq NM_000805

Protein Refseq NP_000796

MIM 137250

UniProt ID P01350

Quality Control Testing



12.5% SDS-PAGE Stained with Coomassie Blue.

 Tel: 1-631-559-9269 1-516-512-3133

 Email: info@creative-biomart.com  Fax: 1-631-938-8127

 45-1 Ramsey Road, Shirley, NY 11967, USA