

Recombinant Full Length Human GATA1 Protein, N-His-tagged

Cat. No. GATA1-1962HFL Lot. No. (See product label)

SPECIFICATION

Product Overview	Recombinant Full Length Human GATA1 Protein, fused to His-tag at N-terminus, was expressed in E. coli.
Species	Human
Source	E.coli
Description	This gene encodes a protein which belongs to the GATA family of transcription factors. The protein plays an important role in erythroid development by regulating the switch of fetal hemoglobin to adult hemoglobin. Mutations in this gene have been associated with X-linked dyserythropoietic anemia and thrombocytopenia.
Form	25mM Tris, pH8.0, 150 mM NaCl, 10% glycerol, 1 % Sarkosyl.
Molecular Mass	42.6 kDa
AA Sequence	A DNA sequence encoding human full-length GATA1.
Purity	> 80% as determined by SDS-PAGE and Coomassie blue staining.
Stability	Stable for 12 months from the date of receipt of the product under proper storage and handling conditions. Avoid repeated freeze-thaw cycles.
Storage	Store at -80 centigrade.

 Tel: 1-631-559-9269 1-516-512-3133

 Email: info@creative-biomart.com  Fax: 1-631-938-8127

 45-1 Ramsey Road, Shirley, NY 11967, USA

Concentration	>50 ug/mL as determined by microplate BCA method.
Protein Families	Adult stem cells, Druggable Genome, ES Cell Differentiation/IPS, Transcription Factors
Full Length	Full L.

GENE INFORMATION

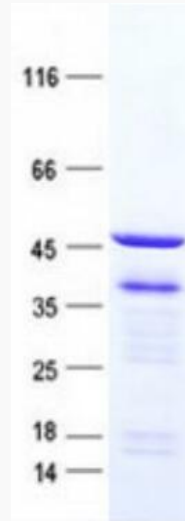
Gene Name	GATA1 GATA binding protein 1 [Homo sapiens (human)]
Official Symbol	GATA1
Synonyms	GF1; GF-1; NFE1; XLTT; ERYF1; NF-E1; XLANP; XLTDA; GATA-1; HAEADA
Gene ID	2623
mRNA Refseq	NM_002049.4
Protein Refseq	NP_002040.1
MIM	305371
UniProt ID	P15976

 Tel: 1-631-559-9269 1-516-512-3133

 Email: info@creative-biomart.com  Fax: 1-631-938-8127

 45-1 Ramsey Road, Shirley, NY 11967, USA

SDS-PAGE



 Tel: 1-631-559-9269 1-516-512-3133

 Email: info@creative-biomart.com  Fax: 1-631-938-8127

 45-1 Ramsey Road, Shirley, NY 11967, USA