

Recombinant Full Length Human GATA2 Protein, C-Flag-tagged

Cat. No. GATA2-1252HFL **Lot. No.** (See product label)

SPECIFICATION

Product Overview

Recombinant Full Length Human GATA2 Protein, fused to Flag-tag at C-terminus, was expressed in Mammalian cells.

Species

Human

Source

Mammalian Cells

Description

This gene encodes a member of the GATA family of zinc-finger transcription factors that are named for the consensus nucleotide sequence they bind in the promoter regions of target genes. The encoded protein plays an essential role in regulating transcription of genes involved in the development and proliferation of hematopoietic and endocrine cell lineages. Alternative splicing results in multiple transcript variants.

Form

25 mM Tris HCl, pH 7.3, 100 mM glycine, 10% glycerol.

Molecular Mass

50.3 kDa

AA Sequence

MEVAPEQPRWMAHPAVLNAQHPDSSHHPGLAHNYMEPAQLLPPDEVDFVFNHLDS
 QGNPYYPANPAHARARV SYSPAHARLTGGQMCRPHLLHSPGLPWLDGGKAALSAA
 AAHHHNPWTVSPFSKTPLHPSAAGGPGGPLSV YPGAGGGSSGGSSVASLTPT
 AAHSGSHLFGFPPTPPKEVSPDPSTTGAASSAGGSAARGEDKDG VKYQVSL
 TESMKMESGSPLRPGLATMGTPATHHPIPTYPSYVPAAAHDYSSGLFHPGGFLGG
 PASSFTP KQRSKARSCSEGRECVNCGATATPLWRRDGTGHYLCNACGLYHKMNG
 QNRPLIKPKRRLSAARRAGTCCA NCQTTTTTLWRRNANGDPVCNACGLYYKLHNV

 Tel: 1-631-559-9269 1-516-512-3133

 Email: info@creative-biomart.com  Fax: 1-631-938-8127

 45-1 Ramsey Road, Shirley, NY 11967, USA

NRPLTMKKEGIQTRNRKMSNKS KSKKGAECFEELSKC
 MQEKSSPFSAALAGHMAPVGHLPFSSHGHILPTPTPIHPSSLSFGHHPSSMVT
 AMGTRTRPLEQKLISEEDLAANDILDYKDDDDKV

Purity > 80% as determined by SDS-PAGE and Coomassie blue staining.

Stability Stable for 12 months from the date of receipt of the product under proper storage and handling conditions. Avoid repeated freeze-thaw cycles.

Storage Store at -80 centigrade.

Concentration >50 ug/mL as determined by microplate BCA method.

Preparation Recombinant protein was captured through anti-DDK affinity column followed by conventional chromatography steps.

Protein Families Adult stem cells, Druggable Genome, ES Cell Differentiation/IPS, Transcription Factors

Full Length Full L.

GENE INFORMATION

Gene Name [GATA2 GATA binding protein 2 \[Homo sapiens \(human\) \]](#)

Official Symbol [GATA2](#)

Synonyms DCML; IMD21; NFE1B; MONOMAC

Gene ID [2624](#)

 Tel: 1-631-559-9269 1-516-512-3133

 Email: info@creative-biomart.com  Fax: 1-631-938-8127

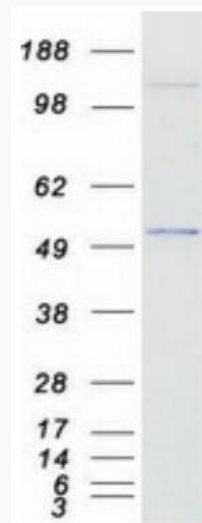
 45-1 Ramsey Road, Shirley, NY 11967, USA

mRNA Refseq [NM_032638.5](#)

Protein Refseq [NP_116027.2](#)

MIM [137295](#)

UniProt ID [P23769](#)



Coomassie blue staining of purified GATA2 protein.

 Tel: 1-631-559-9269 1-516-512-3133

 Email: info@creative-biomart.com  Fax: 1-631-938-8127

 45-1 Ramsey Road, Shirley, NY 11967, USA