

# Active Recombinant Full Length Human GATA3 Protein, C-Flag-tagged

**Cat. No.** GATA3-1052HFL    **Lot. No.** (See product label)

## SPECIFICATION

<b>Product Overview</b>	Recombinant Full Length Human GATA3 Protein, fused to Flag-tag at C-terminus, was expressed in Mammalian cells.
<b>Species</b>	Human
<b>Source</b>	Mammalian Cells
<b>Description</b>	This gene encodes a protein which belongs to the GATA family of transcription factors. The protein contains two GATA-type zinc fingers and is an important regulator of T-cell development and plays an important role in endothelial cell biology. Defects in this gene are the cause of hypoparathyroidism with sensorineural deafness and renal dysplasia.
<b>Form</b>	25 mM Tris HCl, pH 7.3, 100 mM glycine, 10% glycerol.
<b>Bio-activity</b>	GATA3 Activity Verified in a DNA-binding Assay: DNA binding activity of GATA3 as a function of protein concentration. Sensitivity to competitor oligonucleotide demonstrates specificity of protein-DNA binding. EMSA assay
<b>Molecular Mass</b>	47.7 kDa
<b>AA Sequence</b>	MEVTADQPRWVSHHHPAVLNGQHPDTHHPGLSHSYMDAAQYPLPEEVDVLFNIDG QGNHVPPYYGNSVRA TVQRYPPTHHGSQVCRPPLLHGSLPWLDGGKALGSHHTA

 Tel: 1-631-559-9269    1-516-512-3133

 Email: [info@creative-biomart.com](mailto:info@creative-biomart.com)     Fax: 1-631-938-8127

 45-1 Ramsey Road, Shirley, NY 11967, USA

SPWNLSPFKTSIHGSPGPLSVYPPASSSS LSGGHASPHLFTFPPTPPKDVSPDP  
 SLSTPGSAGSARQDEKECLKYQVPLPDSMKLESSHSRGSMTALGG ASSSTHHPITT  
 YPPYVPEYSSGLFPPSSLLGGSPTGFGCKSRPKARSSTEGRECVNCGATSTPLWR  
 RDGT GHYLCNACGLYHKMNGQNRPLIKPKRRLSAARRAGTSCANCQTTTTTLWRR  
 NANGDPVCNACGLYYKLHN INRPLTMKKEGIQTRNRKMSSKSKKCKKVHDSLEDFP  
 KNSSFNPAALSRHMSSLSHISPFSSHMLTTP  
 TPMHPPSSLSFGPHHPSSMVTAMGTRTRPLEQKLISEEDLAANDILDYKDDDDKV

**Purity** > 80% as determined by SDS-PAGE and Coomassie blue staining.

**Stability** Stable for 12 months from the date of receipt of the product under proper storage and handling conditions. Avoid repeated freeze-thaw cycles.

**Storage** Store at -80 centigrade.

**Concentration** >50 ug/mL as determined by microplate BCA method.

**Preparation** Recombinant protein was captured through anti-DDK affinity column followed by conventional chromatography steps.

**Protein Pathways** Adult stem cells, ES Cell Differentiation/IPS, Stem cell relevant signaling - JAK/STAT signaling pathway, Transcription Factors

**Full Length** Full L.

## GENE INFORMATION

**Gene Name** GATA3 GATA binding protein 3 [ Homo sapiens (human) ]

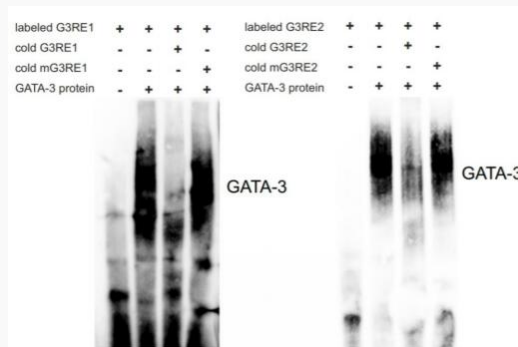
**Official Symbol** GATA3

 Tel: 1-631-559-9269 1-516-512-3133

 Email: [info@creative-biomart.com](mailto:info@creative-biomart.com)  Fax: 1-631-938-8127

 45-1 Ramsey Road, Shirley, NY 11967, USA

<b>Synonyms</b>	HDR; HDRS
<b>Gene ID</b>	<a href="#">2625</a>
<b>mRNA Refseq</b>	<a href="#">NM_002051.3</a>
<b>Protein Refseq</b>	<a href="#">NP_002042.1</a>
<b>MIM</b>	131320
<b>UniProt ID</b>	<a href="#">P23771</a>

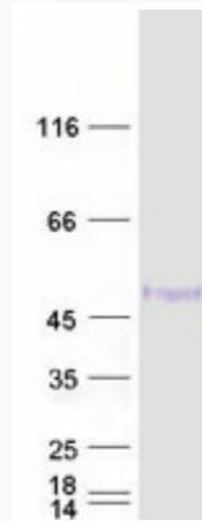


Recombinant GATA-3 bound to the labeled G3RE1 and G3RE2 oligonucleotide probes in gel shift assays. This interaction was blocked by a mutant (m) G3RE1 or G3RE2 probe or excess non-labeled (cold) G3RE1 or G3RE2 probe.

 Tel: 1-631-559-9269 1-516-512-3133

 Email: [info@creative-biomart.com](mailto:info@creative-biomart.com)  Fax: 1-631-938-8127

 45-1 Ramsey Road, Shirley, NY 11967, USA



Coomassie blue staining of purified GATA3 protein.

 Tel: 1-631-559-9269 1-516-512-3133

 Email: [info@creative-biomart.com](mailto:info@creative-biomart.com)  Fax: 1-631-938-8127

 45-1 Ramsey Road, Shirley, NY 11967, USA